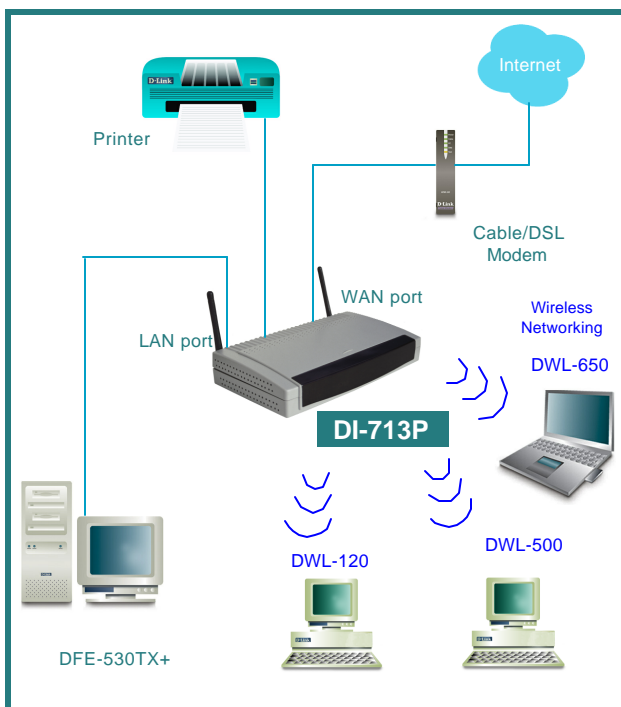


# 1

## Connecting the DI-713P Wireless Router to your network

*When you have completed the steps in this installation guide, your connected network may look similar to this:*



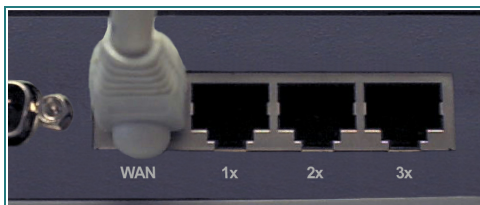
First,  
Plug in the power supply as shown.  
The Power LED will turn on  
to indicate proper operation.



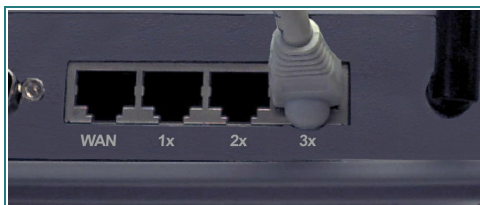
# 1

## Connecting the DI-713P Wireless Router to your network *continued*

Next, connect the WAN port to the Cable/DSL modem. The WAN LED will indicate connection.



Finally, connect computers with ethernet adapters to one of the LAN ports on the DI-713P.



# 2

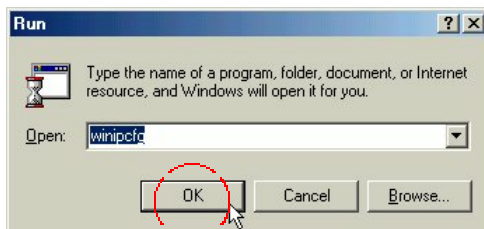
## Installing the DI-713P

### *Checking the IP Address of the computer being used to configure the DI-713P Wireless Router*

Go to Start>Run

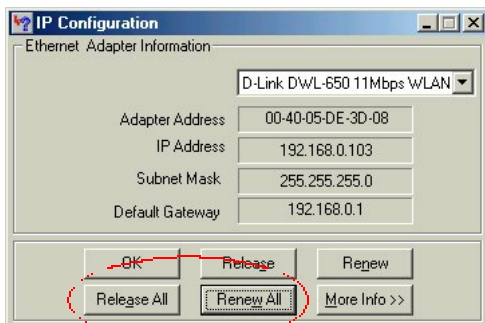
Type in “WINIPCFG”.

*The IP address of the computer must be between 192.168.0.2 and 192.168.0.254 in order to configure the router.*



Click on the “**Release All**” and then on the “**Renew All**” button to obtain an IP address from the broadband router between 192.168.0.100. and 192.168.0.199.

*Note: If you are manually assigning a static IP, please refer to Appendix A.*

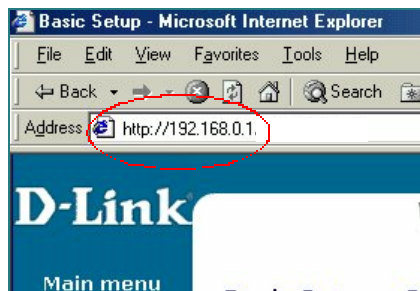


# 2

## Installing the DI-713P

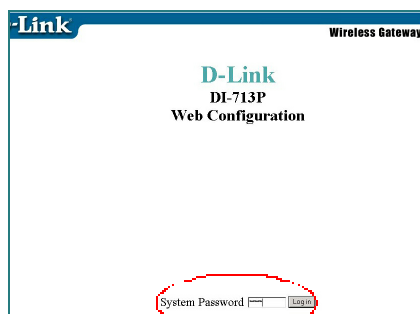
Open the web browser, and type **192.168.0.1** into the URL address box.

*Note: Please disable any proxy server setting for the web browser.*

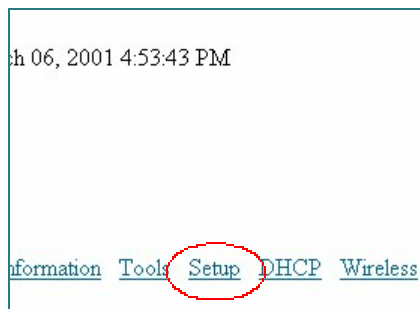


When the login screen appears, type **“admin”** in the **“System Password”** field.

Click **“Login.”**

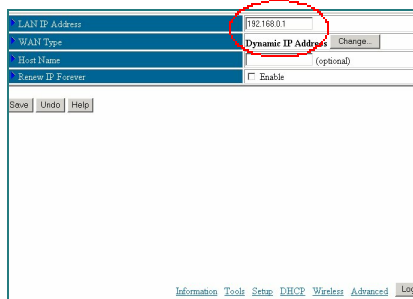


In the following **“Device Information”** screen, select **“Setup.”**



The default IP address of the LAN port is set to 192.168.0.1

By default, the WAN port is set to automatically obtain an IP address from the ISP.



# 2

## Installing the DI-713P

### Cable modem users:

If you are using a cable modem, enter the “**Host name**” given by your cable provider.

Click on “**Save**” and “**Reboot**” to save changes.

LAN IP Address	192.168.0.1
WAN Type	Dynamic IP
Host Name	cx305-b
Renew IP Forever	Enable

Save Undo Help Reboot

Saved! The change doesn't take effective until rebooting!

### DSL users:

From the setup screen, click on the “**Change**” button.

Setup	
LAN IP Address	192.168.0.1
WAN Type	Dynamic IP Address <b>Change...</b>
Host Name	(optional)
Renew IP Forever	<input type="checkbox"/> Enable

Save Undo Help

At this screen, select “**PPP over Ethernet**.”

Click on “**Save**.”

Change WAN Type	
<input type="radio"/> Static IP Address	ISP assigns you a static IP address.
<input type="radio"/> Dynamic IP Address	Obtain an IP address from ISP automatically.
<input checked="" type="radio"/> PPP over Ethernet	Some ISPs require the use of PPPoE to connect to the Internet.
<input type="radio"/> Dial-up Network	To surf the Internet via PSTN/ISDN.

Save Cancel

Enter the “**PPPoE account**” and “**PPPoE password**.”

Click “**Save**” and “**Reboot**” to save changes.

LAN IP Address	192.168.0.1
WAN Type	PPP over Ethernet <b>Change...</b>
PPPoE Account	vialec
PPPoE Password	password
PPPoE Service Name	pppoe (optional)
Assigned IP Address	0.0.0.0 (optional)
Maximum Idle Time	300 seconds
Primary DNS	0.0.0.0
Secondary DNS	0.0.0.0

Save Undo Help Reboot

Saved! The change doesn't take effective until rebooting!



The DI-713P default wireless settings will work out of the box with any other D-Link products.

The factory settings are:  
**channel: 6**  
**network ssid: “default”**

To enable WEP encryption, select the encryption type. (Enable either the 64 or the 128 bit encryption.)

Then enter the encryption key, as shown.

Note: Each key must consist of 5 pairs of hex digits, which means that only digits 0-9 and letters A-F are valid.

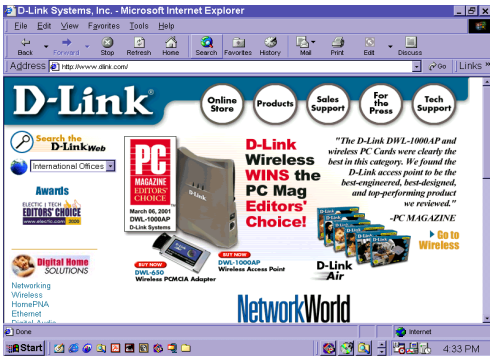
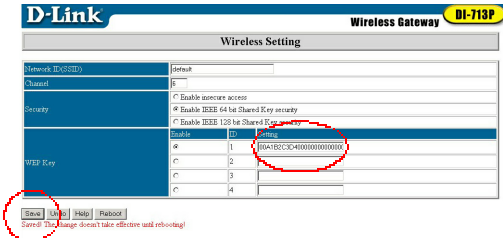
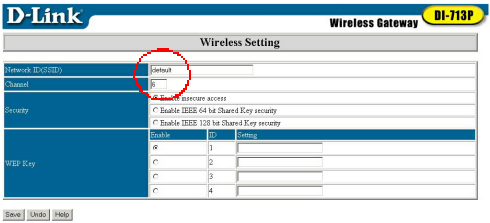
Click **Save** and **Restart** the computer to save changes.

### 3 Checking the connection to the Internet

To check the connection, open the web browser and go to your favorite website.

*If you are unable to browse, please do the following:*

1. Refer to Appendix B to check your connection to the wireless router.
2. Use “Help” on the Main Menu.
3. Refer to the troubleshooting section in the user’s manual.



# 4

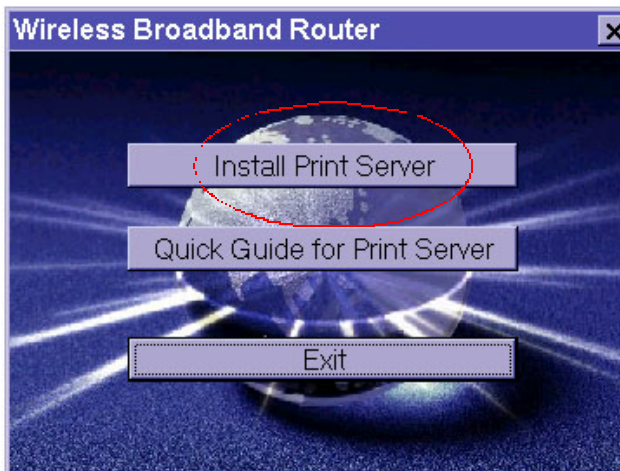
## Print Server Installation (Optional)

**NOTE:** If you choose to use the print server function, plug the printer cable from your printer into the printer port on the DI-713P..

### Installing the Print Server

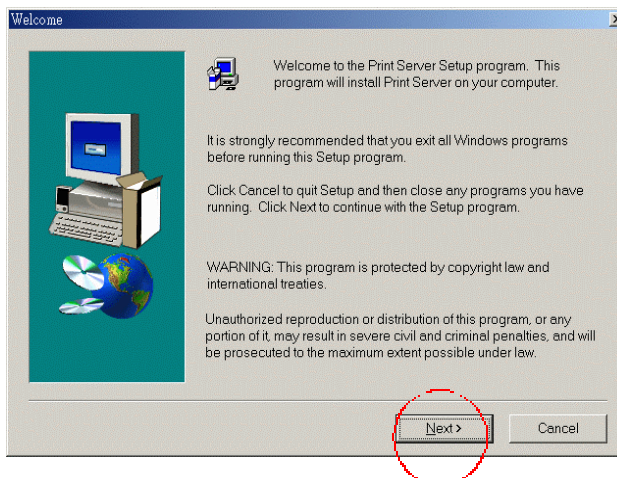
Insert the Print Server installation CD into the CD-ROM drive. The following screen will appear. If the CD does not automatically run, then click on **“install.exe”** on the CD.

**Click on “Install Print Server.”**



At the Welcome screen,

**Click Next**

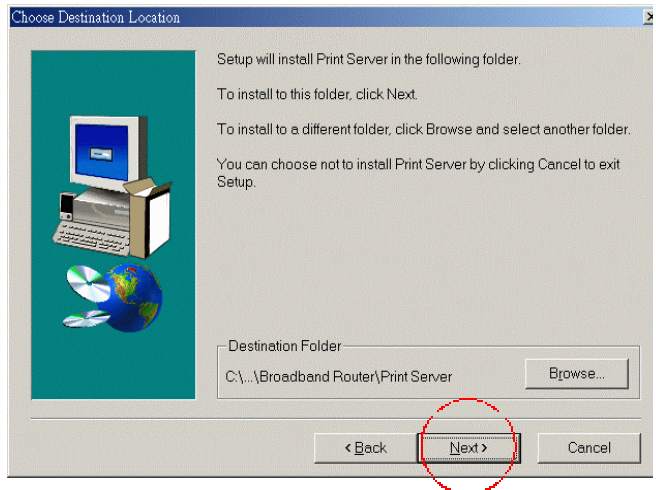


# 4

## Print Server Installation (Optional) *continued*

To select the default folder,

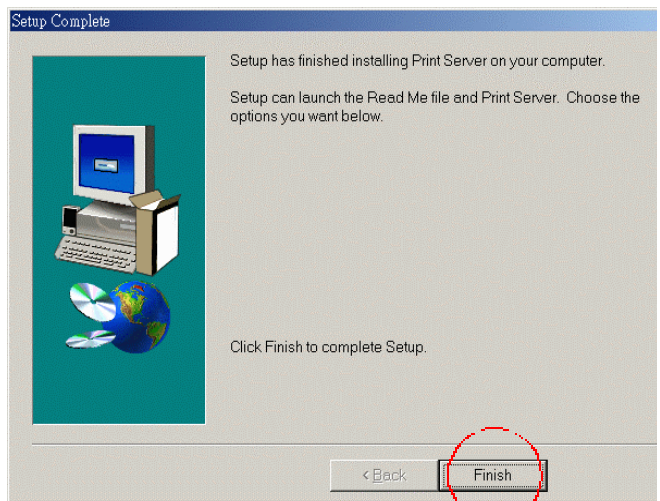
**Click Next**



*Note: Please **Click Browse** to select an alternate folder.*

When this window is displayed,

**Click Finish**

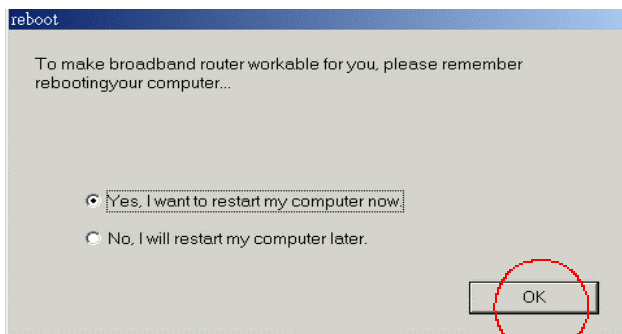


# 4

## Print Server Installation (Optional)

*continued*

Select **Yes, I want to restart my computer.**



**Click OK**

*After the computer has restarted, the software installation is complete.*

# 5

## Configuring your printer

*Note: If your printer is not installed, go to **START>SETTINGS>PRINTERS**. Double Click on the “Add Printer” icon. Follow the “Add Printer Wizard.” When requested to specify a port, select “DLink LPT Port (Print Server.)” When setting up the printer, please use the drivers provided by the printer manufacturer. Once you have set up your printer, please continue with the configuration as follows. Please follow the configuration that corresponds to your Operating System.*

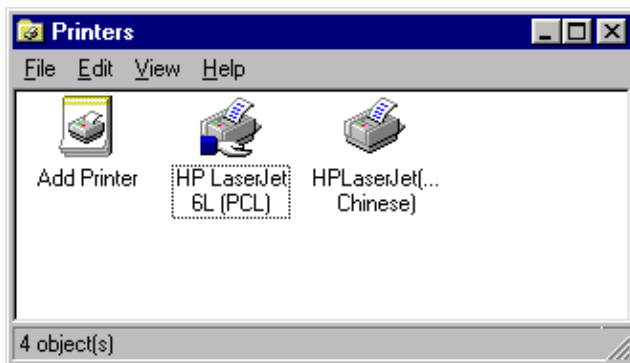
### **A) Configuring your printer in WINDOWS 98**

**If you are using Windows 98, please follow these instructions:**

Go to

**START>  
SETTINGS>  
PRINTERS**

**Right Click** on the printer icon that corresponds to the printer you have connected to the DI-713P.



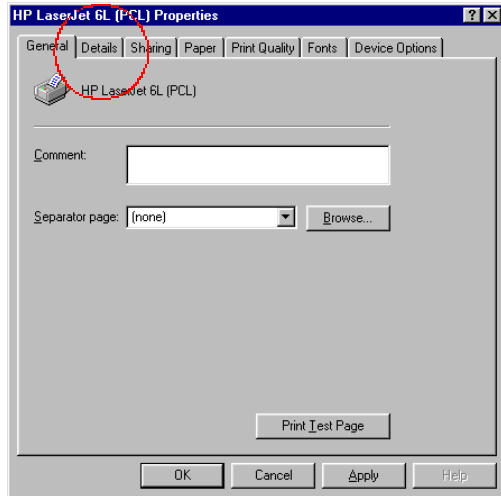
# 5

## Configuring your printer *continued*

### A) Configuring your printer in **WINDOWS 98** *continued*

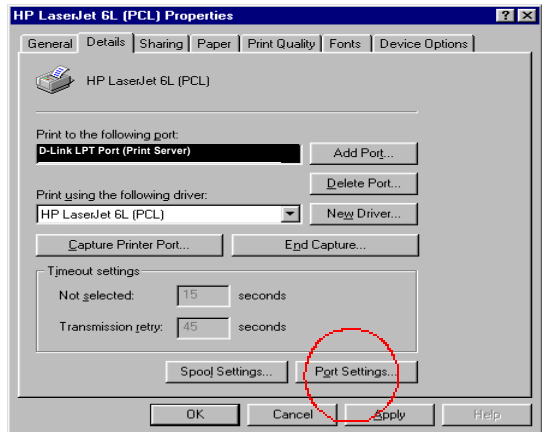
Select **Properties**.

Choose the **Details** tab.



At the “**Add Port**” menu,  
choose “**D-Link LPT port  
(Print Server)**.”

Please make sure the proper  
**printer driver** is selected.



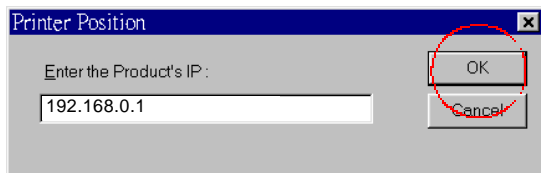
Click “**Port Settings**”

Type in the **IP address** of the  
DI-713P.

**Click OK**

In the previous window, make  
sure the settings are correct.

**Click OK**



*You have completed configuring your printer with Windows 98.*

# 5

## Configuring your printer *continued*

### B) Configuring your printer in **WINDOWS NT**

If you are using Windows NT, please follow these instructions:

Go to **START>**

**SETTINGS>**

**PRINTERS.**

**Right Click** on the printer icon that corresponds with the printer that you have connected to the DI-713P.

**Select Properties,**

choose the **Ports** tab.

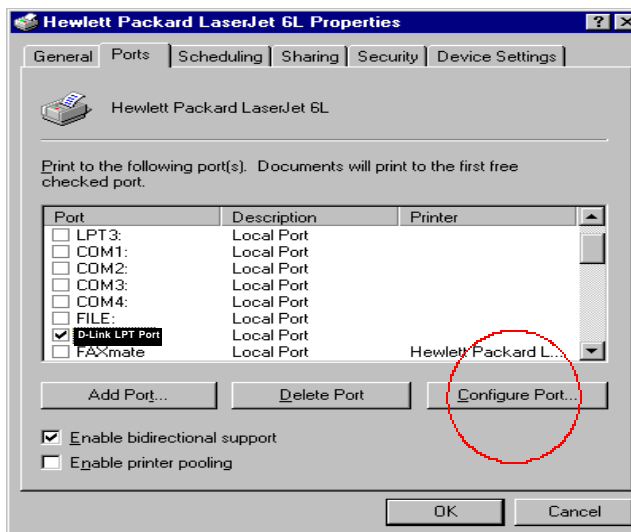
Make sure that the **D-Link port** is highlighted as shown.

**Click Configure Port.**

**Enter IP address.**

**Click OK** at both screens.

*You have completed configuring your printer in Windows NT.*



# 5

## Configuring your printer *continued*

### C) Configuring your printer in **WINDOWS 2000**

If you are using Windows 2000, please follow these instructions:

Go to **START>**

**SETTINGS>**

**PRINTERS.**

**Right Click** on the printer icon that corresponds with the printer that you have connected to the DI-713P.

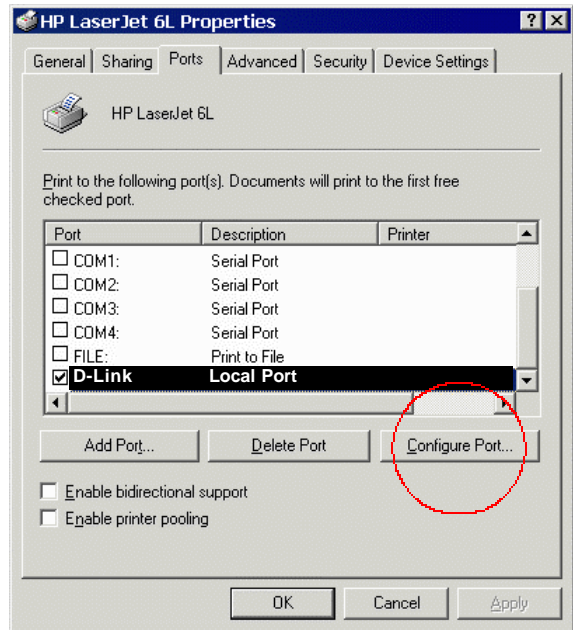
**Select Properties**, choose the **Ports** tab.

Make sure that the **D-Link** port is highlighted as shown.

**Click Configure Port.**

**Enter IP address.**

**Click OK** at both screens.



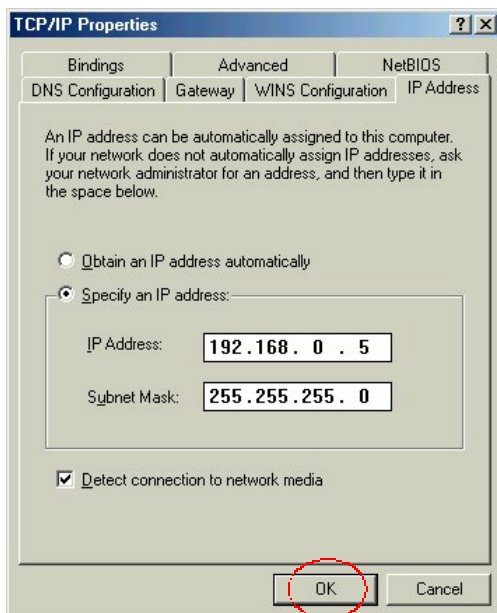
*You have completed configuring your printer in Windows 2000.*

## Assigning a Static IP Address

If the network adapter is unable to obtain an IP address automatically from the Broadband Router, then go to: **START>SETTINGS>CONTROL PANEL>NETWORK>** highlight **“TCP/IP”** and Click on **“Properties.”**

Select the **“IP Address”** tab, and

Click on **“Specify an IP Address.”**





## Checking Your Network Connections

Use “Ping” to check your network connections.

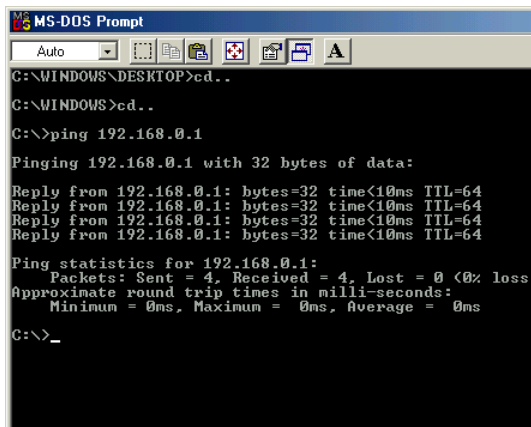
Go to **START>RUN**

Type “**command**” in the box.  
**Click OK.**

Type “**ping 192.168.0.1**”, which is the IP address of the LAN port of the Broadband Router.

Hit the “**Enter**” key.

A successful connection will show four replies, as shown at left.

A screenshot of an MS-DOS Prompt window. The title bar reads "MS-DOS Prompt". The window shows the following text:

```
C:\WINDOWS\DESKTOP>cd..
C:\WINDOWS>cd..
C:\>ping 192.168.0.1
Pinging 192.168.0.1 with 32 bytes of data:
Reply from 192.168.0.1: bytes=32 time<10ms TTL=64
Reply from 192.168.0.1: bytes=32 time<10ms TTL=64
Reply from 192.168.0.1: bytes=32 time<10ms TTL=64
Reply from 192.168.0.1: bytes=32 time<10ms TTL=64
Ping statistics for 192.168.0.1:
    Packets: Sent = 4, Received = 4, Lost = 0 (0% loss),
    Approximate round trip times in milli-seconds:
        Minimum = 0ms, Maximum = 0ms, Average = 0ms
C:\>_
```