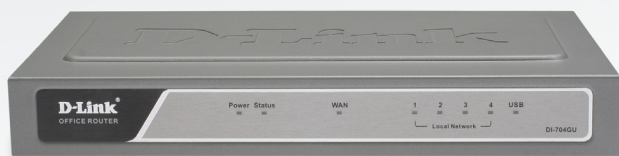


DI-704GU

Release 1



Gigabit QoS Router

Quick Install Guide

Business Class Networking

System Requirements

- Ethernet-based Cable or DSL Modem
- Computers with Windows®, Macintosh®, or Linux-based operating systems with an installed Ethernet adapter
- Internet Explorer 6.x and above, or Netscape® Navigator 7.0 and above

Package Contents



D-Link DI-704GU
Gigabit QoS Router



CD-ROM with
Manual



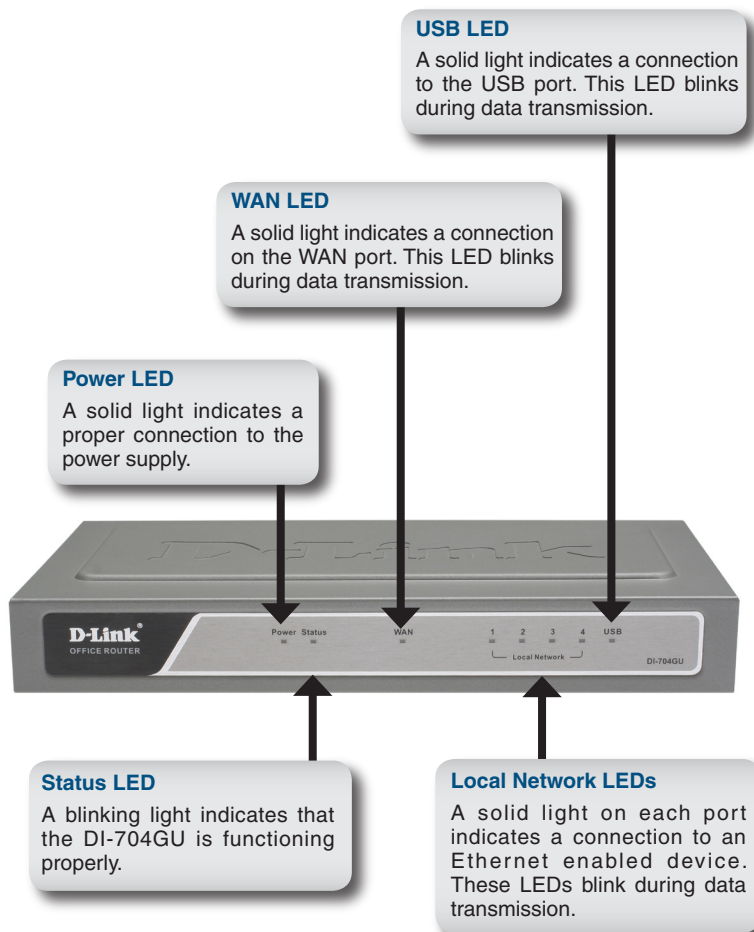
CAT5 Ethernet Cable

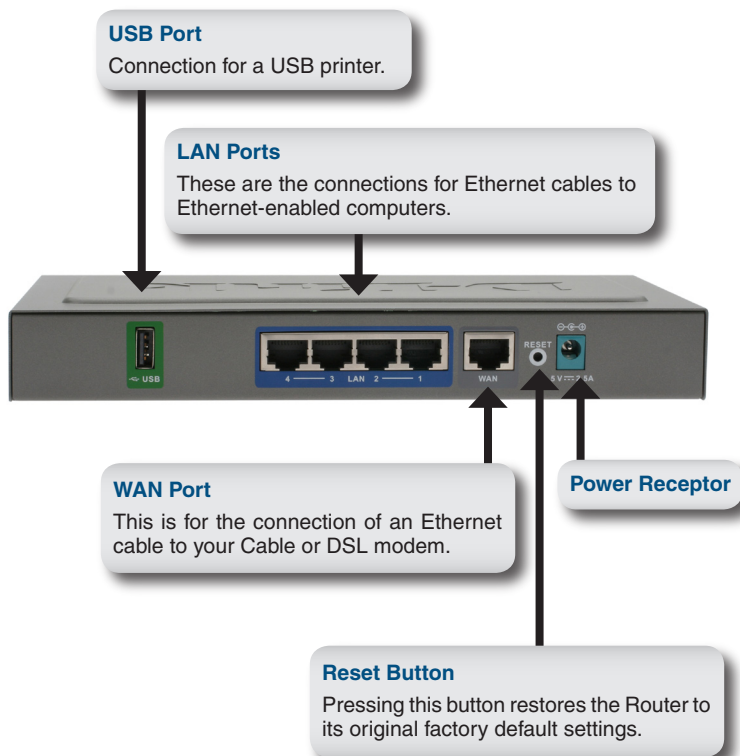


Power Adapter

If any of the above items are missing, please contact your reseller.

Hardware Overview



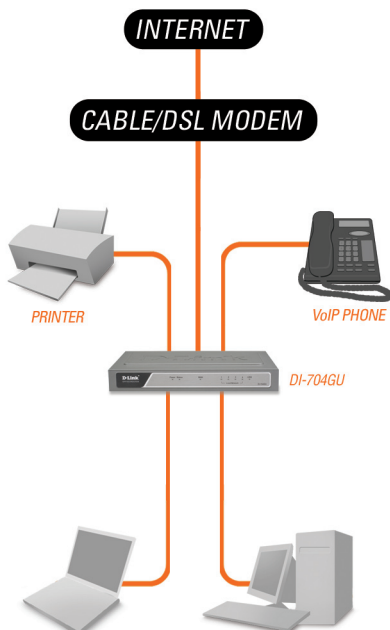


Hardware Installation

- A.** First, connect the power adapter to the receptor at the back panel of the DI-704GU and then plug the other end of the power adapter to a wall outlet or power strip. The Power LED will turn ON to indicate proper operation.
- B.** 1. Power off your Cable or DSL modem; some devices may not have a on/off switch and will require you to unplug the power adapter. Now, the DI-704GU should be powered on and the Cable/DSL modem should be turned off.
2. Cable/DSL modem (**Power Off**) – DI-704GU (**Power On**) Connect an Ethernet cable to the Ethernet jack located on the Cable/DSL modem. After the Ethernet cable is securely connected, power on the Cable/DSL modem by turning on the unit or plugging in the power adapter.
3. Cable/DSL modem (**Power On**) – DI-704GU (**Power On**) Insert the other end of the Ethernet cable to the WAN PORT on the back panel of the DI-704GU. The WAN LED light will illuminate to indicate proper connection. If the WAN LED is not illuminated, please go back to step B1 and repeat the instructions.
- C.** Insert an Ethernet cable to LAN port 1 on the back panel of the DI-704GU and an available Ethernet port on the network adapter in the computer you will use to configure the DI-704GU. The LED light for LAN Port 1 will illuminate to indicate proper connection.
- Note:** *The LAN Ports on the DI-704GU are Auto-MDI/MDIX. Which means you can use straight-through or crossover Ethernet cables to connect to the LAN Ports.*
- D.** Computers equipped with Ethernet or Gigabit Ethernet adapters will be able to connect to the DI-704GU. The DFE-530TX or DGE-530T PCI Adapters (as examples) will be able to connect with the router without any additional configuration required.

Getting Started

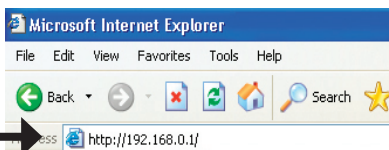
YOUR NETWORK SETUP



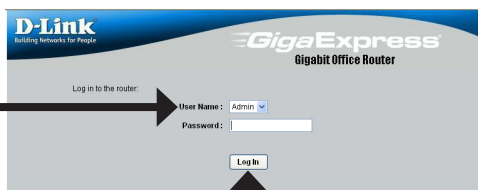
Configuration

This section will show you how to configure your new D-Link Gigabit QoS Router using the D-Link Setup Wizard.

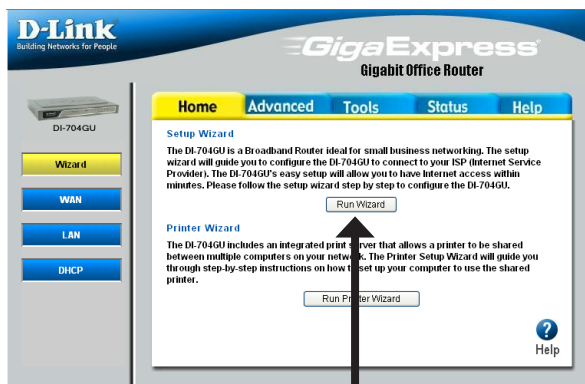
Open your Web browser and type “**http://192.168.0.1**” into the URL address box. Then press the **Enter** or **Return** key.



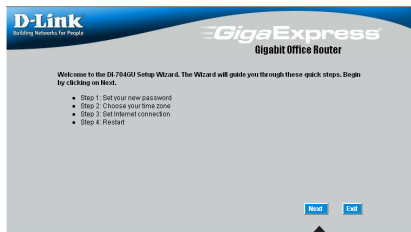
Select “**Admin**” from the User Name drop down menu and leave the password field blank.



Click **Log In**

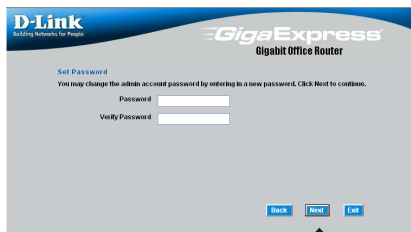


Click **Run Wizard**



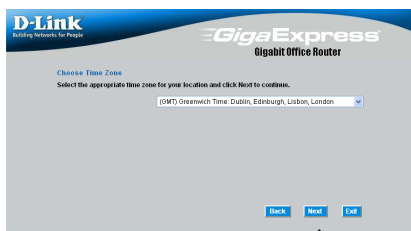
Click **Next**

You have the option to establish a password for the User Name "Admin".



Click **Next**

Choose your time zone from the drop down list.



Click **Next**

Dynamic IP Address

You will be prompted to select the type of Internet connection for your router. If you are unsure of which setting to select, please contact your Internet Service Provider.

Static IP Address - page 10

PPPoE - page 11

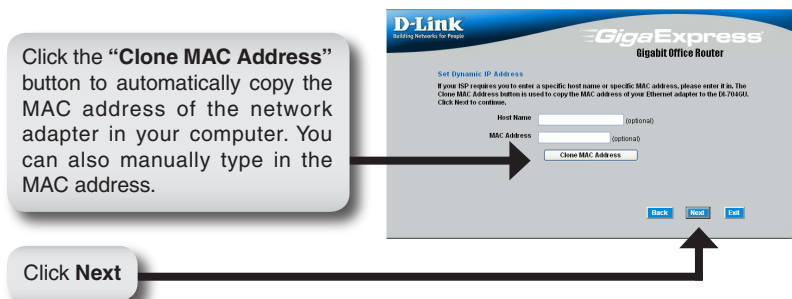
PPTP - page 12

L2TP - page 13

Big Pond - page 14



If you selected Dynamic IP Address, this screen will appear: (Used mainly for Cable Internet service).



Continue to page 15

Static IP Address

If your ISP requires a Static IP Address, please select the corresponding radio button.

D-Link
Building Networks for People

GigaExpress
Gigabit Office Router

Select Internet Connection Type (WAN)
Select the connection type to connect to your ISP. Click Next to continue.

<input type="radio"/> Dynamic IP Address	Choose this option to obtain an IP address automatically from your ISP. (For most Cable modem users)
<input checked="" type="radio"/> Static IP Address	Choose this option to set static IP information provided to you by your ISP.
<input type="radio"/> PPPoE	Choose this option if your ISP uses PPPoE. (For most DSL users)
<input type="radio"/> PPTP	PPTP Client
<input type="radio"/> L2TP	L2TP Client
<input type="radio"/> BigPond	BigPond Cable

Back Next Exit

Click Next

Enter the IP address that was originally provided to you by your ISP. You will need to complete all of the required fields.

D-Link
Building Networks for People

GigaExpress
Gigabit Office Router

Set Static IP Address
Enter in the static IP information provided to you by your ISP. Click Next to continue.

WAN IP Address	0.0.0
Subnet Mask	255.255.255.0
Gateway Address	0.0.0
Primary DNS Address	0.0.0
Secondary DNS Address	0.0.0

Back Next Exit

Click Next

Continue to page 15

PPPoE

If your ISP uses PPPoE (Point-to-Point Protocol over Ethernet), select the corresponding radio button.

The screenshot shows the 'Select Internet Connection Type (WAN)' screen. It has two columns of options. The left column has radio buttons for 'Dynamic IP Address', 'Static IP Address', 'PPPoE' (which is selected), 'PPTP', 'L2TP', and 'BigPond'. The right column has instructions: 'Choose this option to obtain an IP address automatically from your ISP (if most Cable modem users)', 'Choose this option to set static IP information provided to you by your ISP.', 'Choose this option if your ISP uses PPPoE (if most DSL users)', 'PPTP Client', 'L2TP Client', and 'BigPond Cable'. At the bottom right are 'Back', 'Next', and 'Exit' buttons. An arrow points from the 'Click Next' button to the 'Next' button on the screen.

Click Next

If you have a Dynamic IP connection, enter the User Name and Password provided to you by your ISP.

The screenshot shows the 'Set PPPoE' screen. It says 'The service name is optional but may be required by your ISP. Click Next to continue.' There are two radio buttons: 'Dynamic IP' (selected) and 'Static IP'. Below are input fields for 'IP Address' (with '0.0.0.0' entered), 'User Name', 'Password', 'Retry Password', and 'Service Name (optional)'. At the bottom right are 'Back', 'Next', and 'Exit' buttons. An arrow points from the 'Click Next' button to the 'Next' button on the screen.

Click Next

Note: Please be sure to remove any existing PPPoE client software installed on your computers.

Continue to page 15

PPTP

If your ISP uses PPTP (Point to Point Tunneling Protocol), select the corresponding radio button.



D-Link
Building Networks For People

GigaExpress
Gigabit Office Router

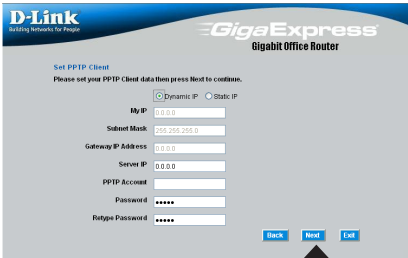
Select Internet Connection Type (WAN)
Select the connection type to connect to your ISP. Click Next to continue.

<input type="radio"/> Dynamic IP Address	Choose this option to obtain an IP address automatically from your ISP. (For most Cable Modem users)
<input type="radio"/> Static IP Address	Choose this option to set static IP information provided to you by your ISP.
<input type="radio"/> PPPoE	Choose this option if your ISP uses PPPoE. (For most DSL users)
<input checked="" type="radio"/> PPTP	PPTP Client
<input type="radio"/> L2TP	L2TP Client
<input type="radio"/> BigPond	BigPond Cable

Back Next Exit

Click Next

If you have a Dynamic IP connection, enter the Server IP, PPTP Account, and Password provided to you by your ISP.



D-Link
Building Networks For People

GigaExpress
Gigabit Office Router

Set PPTP Client
Please set your PPTP Client data then press Next to continue.

☐ Dynamic IP ☐ Static IP

My IP: 0.0.0

Subnet Mask: 255.255.255.0

Gateway IP Address: 0.0.0

Server IP: 0.0.0

PPTP Account:

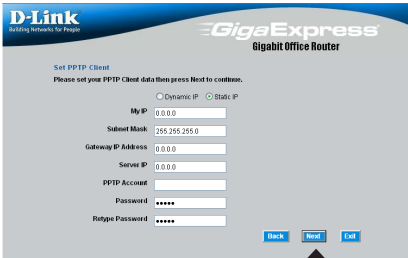
Password: *****

Retry Password: *****

Back Next Exit

Click Next

If you have a Static IP connection, enter the IP Address, Subnet Mask, Gateway IP Address, Server IP, PPTP Account, and Password provided to you by your ISP.



D-Link
Building Networks For People

GigaExpress
Gigabit Office Router

Set PPTP Client
Please set your PPTP Client data then press Next to continue.

☐ Dynamic IP ☐ Static IP

My IP: 0.0.0

Subnet Mask: 255.255.255.0

Gateway IP Address: 0.0.0

Server IP: 0.0.0

PPTP Account:

Password: *****

Retry Password: *****

Back Next Exit

Click Next

Continue to page 15

L2TP

If your ISP uses L2TP (Layer Two Tunneling Protocol), select the corresponding radio button.

D-Link
Building Networks for People

GigaExpress
Gigabit Office Router

Select Internet Connection Type (WAN)
Select the connection type to connect to your ISP. Click Next to continue.

<input type="radio"/> Dynamic IP Address	Choose this option to obtain an IP address automatically from your ISP. (For most Cable modem users)
<input type="radio"/> Static IP Address	Choose this option to set static IP information provided to you by your ISP.
<input type="radio"/> PPPoE	Choose this option if your ISP uses PPPoE. (For most DSL users)
<input checked="" type="radio"/> L2TP	PPTP Client
<input type="radio"/> BigPond	L2TP Client
	BigPond Cable

Back Next Exit

Click Next

If you have a Dynamic IP connection, enter the L2TP Server IP Address, User Name, and Password provided to you by your ISP.

D-Link
Building Networks for People

GigaExpress
Gigabit Office Router

Set L2TP Client
Please set your L2TP Client data then press Next to continue.

☒ Dynamic IP ☐ Static IP

L2TP IP Address: 0.0.0

L2TP Subnet Mask: 255.255.255.0

L2TP Gateway IP Address: 0.0.0

L2TP Server IP Address may be same as gateway: 0.0.0

User Name:

Password: ****

Porttype Password: ****

Back Next Exit

Click Next

If you have a Static IP connection, enter the L2TP IP Address, Subnet Mask, Gateway IP Address, L2TP Server IP, User Name, and Password provided to you by your ISP.

D-Link
Building Networks for People

GigaExpress
Gigabit Office Router

Set L2TP Client
Please set your L2TP Client data then press Next to continue.

☐ Dynamic IP ☒ Static IP

L2TP IP Address: 0.0.0

L2TP Subnet Mask: 255.255.255.0

L2TP Gateway IP Address: 0.0.0

L2TP Server IP Address may be same as gateway: 0.0.0

User Name:

Password: ****

Porttype Password: ****

Back Next Exit

Click Next

Continue to page 15

Big Pond

Select this option if you connect to the internet through Telstra BigPond Cable Broadband in Australia.

D-Link
Building Networks for People

GigaExpress
Bigabit Office Router

Select Internet Connection Type (WAN)
Select the connection type to connect to your ISP. Click Next to continue.

<input type="radio"/> Dynamic IP Address	Choose this option to obtain an IP address automatically from your ISP (if or most Cable modem users)
<input type="radio"/> Static IP Address	Choose this option to set static IP information provided to you by your ISP
<input type="radio"/> PPPoE	Choose this option if your ISP uses PPPoE (if or most DSL users)
<input type="radio"/> PPTP	PPTP Client
<input type="radio"/> L2TP	L2TP Client
<input checked="" type="radio"/> BigPond	BigPond Cable

Back Next Exit

Click Next

Enter the User Name, and Password provided to you by your ISP.

D-Link
Building Networks for People

GigaExpress
Bigabit Office Router

Set BigPond
Please set your BigPond Cable data then press Next to continue.

User Name:

Password:

Re-type Password:

Auth Server:

Back Next Exit

Click Next

Continue to page 15

Your Setup is Complete!



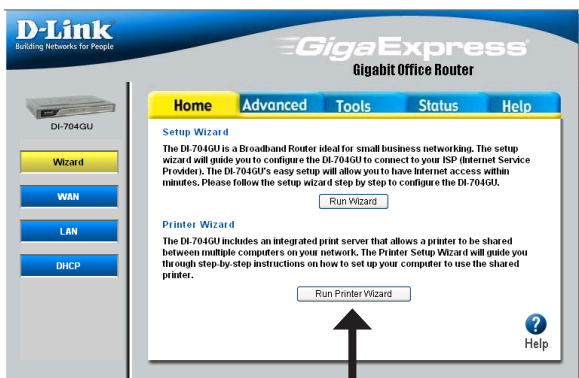
Test Internet Connection

You will be returned to the **Home** tab. Close this web browser window and open a new one (i.e., *Internet Explorer* or *Netscape® Navigator*). Link to your favorite Web site to test your Internet connection.

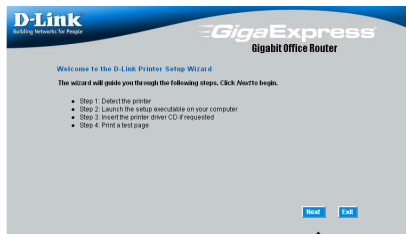
For additional settings or information, refer to the **Advanced**, **Tools**, or **Status** tabs on the web-management interface; or to the User's Manual located on the CD.

Printer Wizard

Make sure your printer is connected to the USB port on the router.

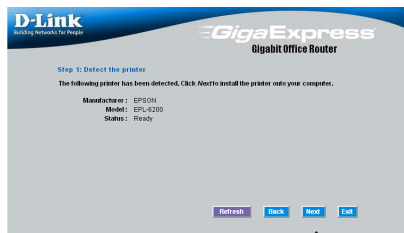


Click **Run Printer Wizard**



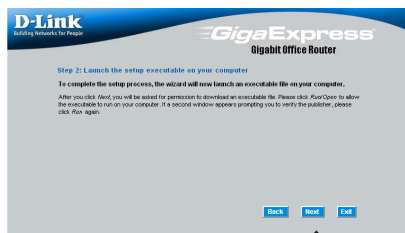
Click **Next**

The wizard will identify the make and model of your printer, as well as its status.



Click **Next**

Click **Next** to run the Printer Setup application.

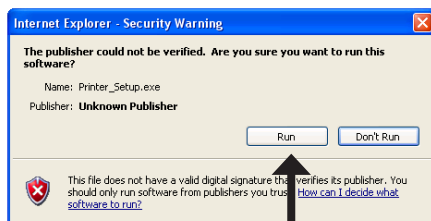


Click **Next**

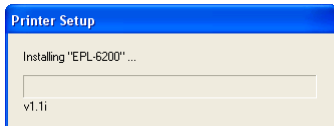
This application can only run when accessed from the router. Do not click **Save**.



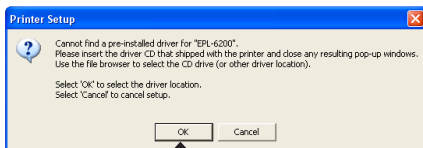
Click **Run**



Click **Run**

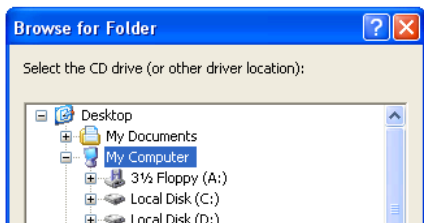


You may need to supply the drivers for your printer if they are not built into Windows®.

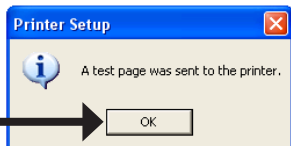


Click **OK**

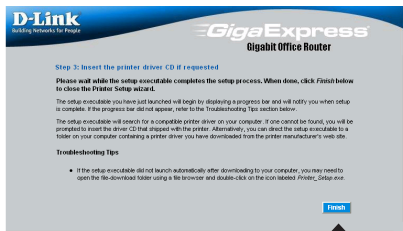
Click **Browse** to locate the driver and then click **OK**.



Once the wizard has completed installing your printer, you will be prompted to print a test page to verify its functionality.



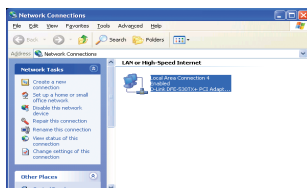
Click **OK**



Click **Finish**

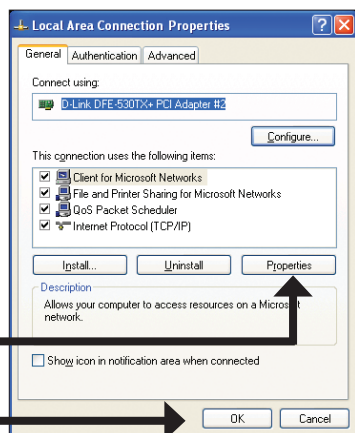
Appendix

To connect to the network, make sure the network adapter in your computer is configured properly. Here's how to configure the network adapter to obtain an IP address automatically when using the DI-704GU Gigabit QoS Router.



For Microsoft Windows® XP:

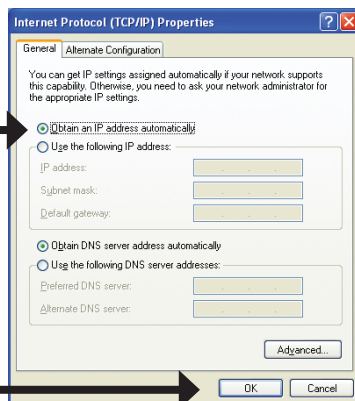
Right click on **My Network Places** and select **Properties**. Right click on the **Network Connection** associated with the Ethernet adapter and select **Properties** (e.g., D-Link DFE-530TX+).



Click **Internet Protocol (TCP/IP)** and then click **Properties**.

Click **OK**

Select **Obtain an IP Address automatically**.



Click **OK**

For Apple Macintosh® OS X:

Go to the **Apple Menu** and click on **System Preferences**, and select **Network**.

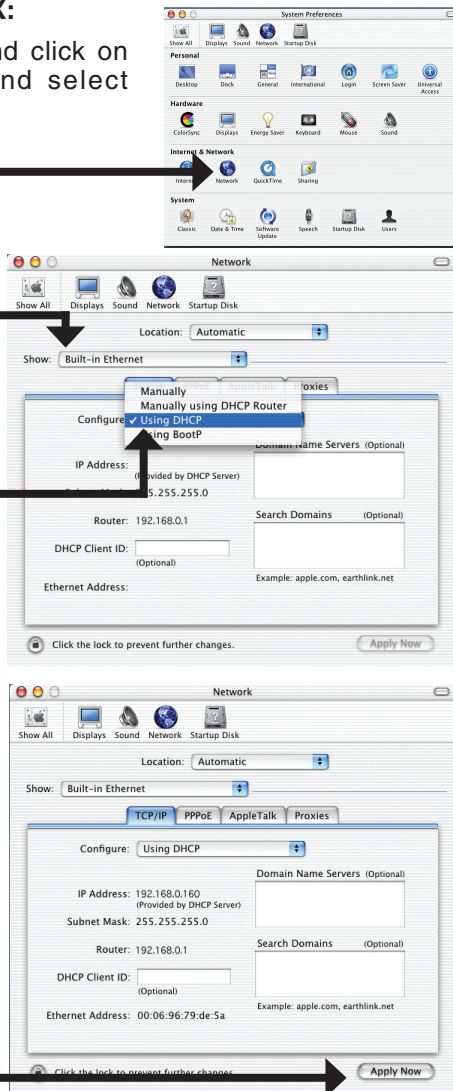
Click **Network**

Select **Built-in Ethernet** in the **Show** pull down menu.

Select **Using DHCP** in the **Configure** pull down menu.

The IP address information, the Subnet Mask, the Router's IP address, and the Ethernet adapter address will appear.

Click **Apply Now** and restart your computer (if necessary).



Notes

Notes

Technical Support

D-Link's websites contain the latest user documentation and software updates for D-Link products.

The United Kingdom & Ireland:

D-Link UK & Ireland Technical Support over the Internet:

<http://www.dlink.co.uk>

<ftp://ftp.dlink.co.uk>

D-Link UK & Ireland Technical Support over the Telephone:

08456 12 0003 (United Kingdom)

+1890 886 899 (Ireland)

Lines Open

8.00am-10.00pm Mon-Fri

10.00am-7.00pm Sat & Sun

For Customers in Canada:

D-Link Canada Technical Support over the Telephone:

1-800-361-5265 (Canada)

Mon. to Fri. 7:30AM to 9:00PM EST

D-Link Canada Technical Support over the Internet:

<http://support.dlink.ca>

email: support@dlink.ca



Version 1.0

Revised 20 July 2006

6DI704GUQ.01G

Copyright ©2006 D-Link Corporation/D-Link Systems, Inc. All rights reserved. D-Link and the D-Link logo are registered trademarks of D-Link Corporation or its subsidiaries in the United States and other countries. Other trademarks are the property of their respective owners. Product specifications, size and shape are subject to change without notice, and actual product appearance may differ from that depicted on the packaging. Visit www.dlink.com for more details.