

# D-Link Quick Installation Guide

This product can be set up using any current web browser, i.e., Internet Explorer 5x, Netscape Navigator 4x.



**DI-604**  
Express Ethernet™  
Broadband Router

## Before You Begin

1. If you purchased this router to share your high-speed Internet connection with other computers, you must have either an Ethernet-based Cable or a DSL modem with an established Internet account from an Internet Service Provider (ISP).
2. It's best to use the same computer that is connected to your modem for configuring the DI-604 router. The DI-604 Router acts as a DHCP server and will assign all the necessary IP address information on your network. **See Appendix at the end of this Quick Installation Guide or the Manual on the CD-ROM for setting each network adapter to automatically obtain an IP address.**

## Check Your Package Contents

These are the items included with your DI-604 purchase:



- DI-604 Ethernet Broadband Router



- CD-ROM (containing Manual and Warranty)



- Ethernet (CAT5 UTP/Straight-Through) Cable



- 5V DC, 2A Power Adapter



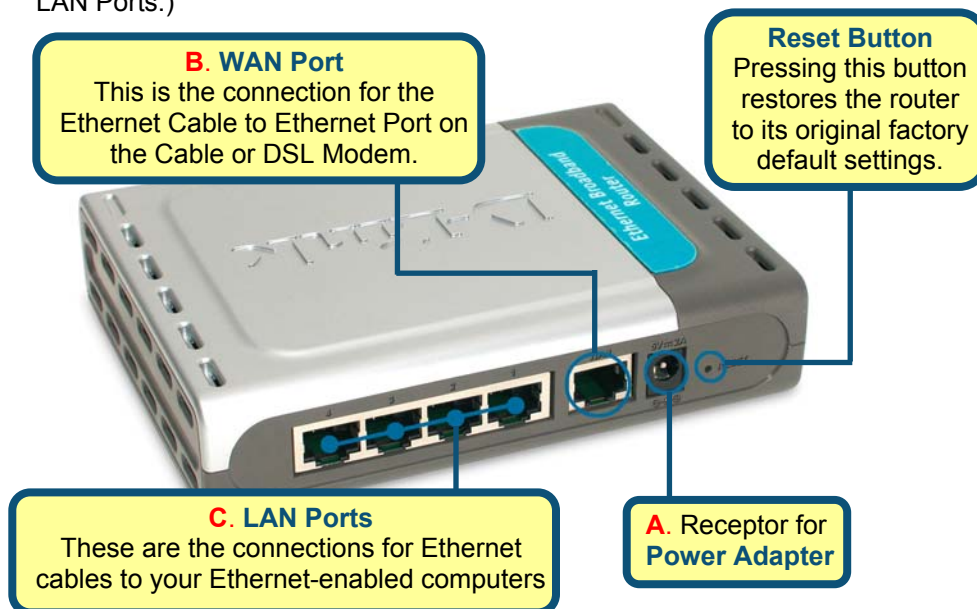
Using a power supply with a different voltage rating will damage and void the warranty for this product.

If any of the above items are missing, please contact your reseller.

# 1

## Connecting The DI-604 Broadband Router To Your Network

- A.** First, connect the power adapter to the **receptor** at the back panel of the DI-604 and then plug the other end of the power adapter to a wall outlet or power strip. The Power LED will turn **ON** to indicate proper operation.
- B.** 1. Power off your Cable or DSL modem; some devices may not have a on/off switch and will require you to unplug the power adapter. Now, the DI-604 should be powered on and the Cable / DSL modem should be turned off.
2. Cable / DSL modem (**Power Off**) – DI-604 (**Power On**)  
Connect an Ethernet cable to the Ethernet jack located on the Cable / DSL modem. After the Ethernet cable is securely connected, power on the Cable / DSL modem by turning on the unit or plugging in the power adapter.
3. Cable / DSL modem (**Power On**) – DI-604 (**Power On**)  
Insert the other end of the Ethernet cable to the WAN PORT on the back panel of the DI-604. The WAN LED light will illuminate to indicate proper connection. If the WAN LED is not illuminated, please go back and step B and repeat its instructions.
- C.** Insert an Ethernet cable to **LAN port 1** on the back panel of the DI-604 and an available Ethernet port on the network adapter in the computer you will use to configure the DI-604. The LED light for LAN Port 1 will illuminate to indicate proper connection. (Note: The LAN Ports on the DI-604 are Auto-MDI/MDIX. Meaning you can use a straight-through or crossover-Ethernet cable to the LAN Ports.)



# 3

## Connecting Additional Computers To The DI-604 Broadband Router

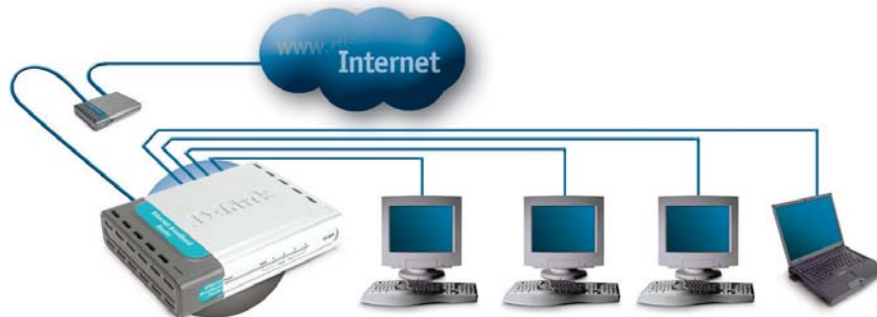
Using additional Ethernet (CAT5 UTP/Straight-Through) cables, connect your Ethernet-equipped computer(s) to one of the 3 remaining Ethernet LAN ports on the back panel of the DI-604.



**LAN Port LEDs.** Each of the LAN ports on the back of the DI-604 have a corresponding LED light on the front panel of the unit. When a proper connection has been made to a computer that is ON, the LED on the front panel should illuminate.

When you have completed the steps in this *Quick Installation Guide*, your connected network should look similar to this:

**Cable or DSL Modem**

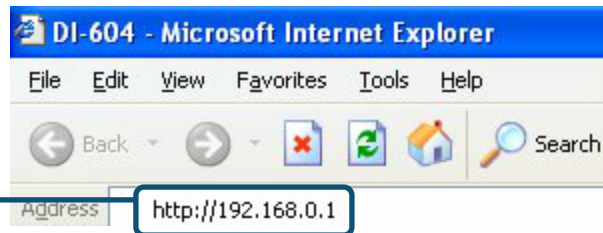


**DI-604 Ethernet Broadband Router**

**Computers connected to the LAN Ports**

## 4 Using The Setup Wizard

Open your Web browser and type "**http://192.168.0.1**" into the URL address box. Then press the **Enter** or **Return** key.



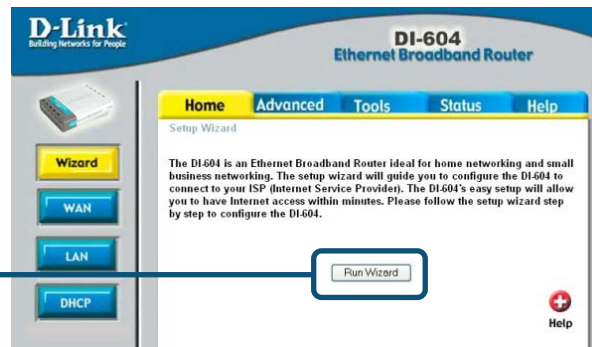
The logon pop-up screen will appear.

Type "**admin**" for the username and leave the password field blank.



Click **OK**

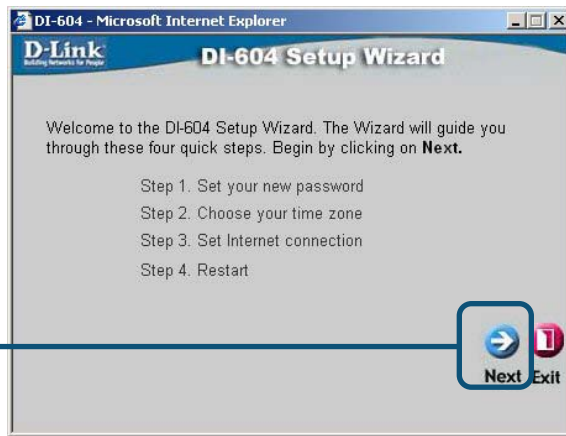
Once you have logged in, the **Home** screen will appear.



Click **Run Wizard**

You will see the following screens.

Click **Next**



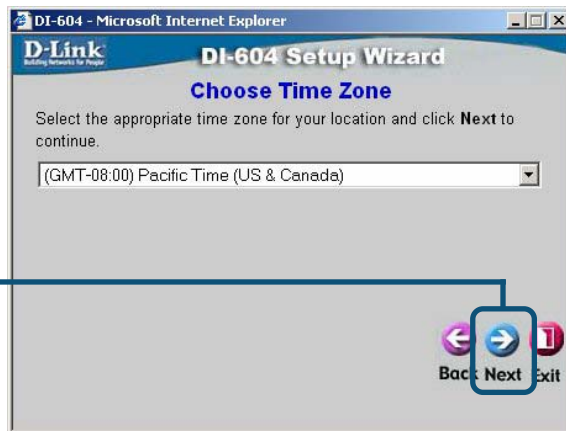
**Step 1 - Set up your new password.** You have the option to establish a password.

Click **Next**



**Step 2 - Choose your time zone.**

Click **Next**



# 4

## The Setup Wizard (continued)

Select the type of Internet connection for your router.

**Select** one of these settings

**Dynamic IP Address**  
Choose this option to obtain an IP address automatically from your ISP. (For most Cable modem users)

**Static IP Address**  
Choose this option to set static IP information provided to you by your ISP.

**PPPoE**  
Choose this option if your ISP uses PPPoE. (For most DSL users)

Back Next Exit

If you are unsure of which setting to select, please contact your Internet Service Provider.

Click **Next**

If you selected **Dynamic IP Address**, this screen will appear:

Click the **"Clone MAC Address"** button to automatically copy the MAC address of the network adapter in your computer. You can also manually type in the MAC address.

**Set Dynamic IP Address**

If your ISP requires you to enter a specific host name or specific MAC address, please enter it in. The **Clone MAC Address** button is used to copy the MAC address of your Ethernet adapter to the DI-604. Click **Next** to continue.

Host Name: DI-604 (optional)

MAC: 00 - 03 - 2F - FF - FC - 09 (optional)

Clone MAC Address

Back Next Exit

**What is a MAC address?** Each network adapter has a discrete Media Access Control (MAC) address. Note that some computers and peripherals may already include built-in network adapters.

Click **Next**

If your ISP requires a **Static IP Address**, and this option is selected, then this screen will appear:

Enter the IP address information originally provided to you by your ISP. You will need to complete all the required fields.

DI-604 - Microsoft Internet Explorer

**D-Link**  
Building Networks for People

**DI-604 Setup Wizard**

**Set Static IP Address**

Enter in the static IP information provided to you by your ISP. Click **Next** to continue.

WAN IP Address	192.168.0.50
WAN Subnet Mask	255.255.255.0
WAN Gateway Address	192.168.0.1
Primary DNS Address	192.168.1.10
Secondary DNS Address	0.0.0.0 (optional)

Do not use the numbers displayed in these fields. They are only shown as an example.

Back Next Exit

Click **Next**

If your ISP uses **PPPoE** (Point-to-Point Protocol over Ethernet) and this option is selected, then this screen will appear:

! Please be sure to remove any existing PPPoE client software installed on your computers.

Enter in the username and password provided to you by your ISP.

DI-604 - Microsoft Internet Explorer

**D-Link**  
Building Networks for People

**DI-604 Setup Wizard**

**Set PPPoE**

The service name is optional but may be required by your ISP. Click **Next** to continue.

User Name	test
Password	.....
Retype Password	.....
Service Name (optional)	

Please be sure to remove any existing PPPoE client software installed on your computers.

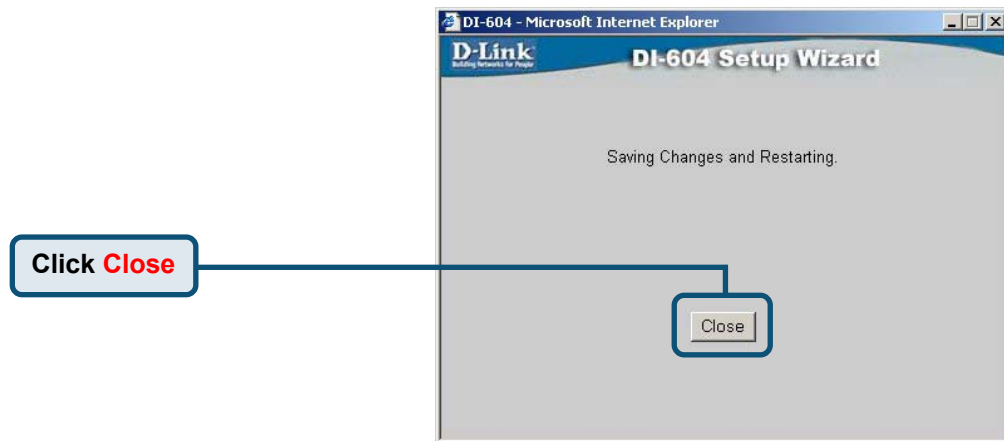
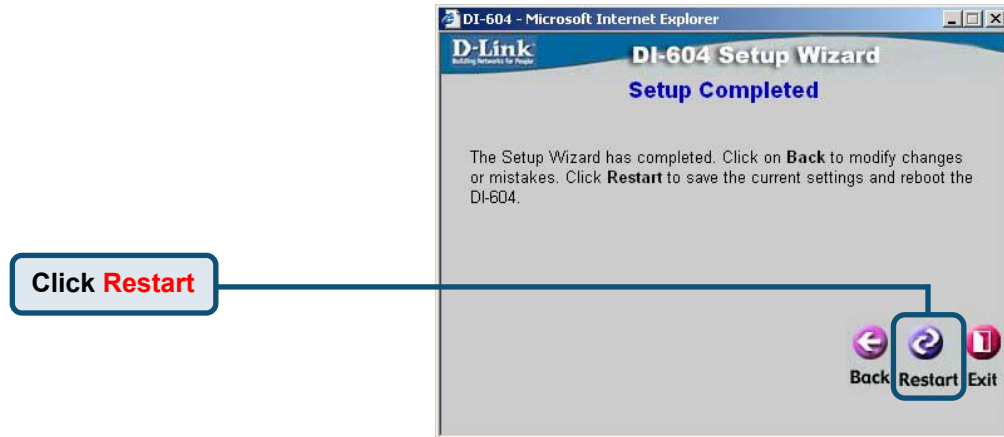
Back Next Exit

Click **Next**



5

## Your Setup is Complete!



You will be returned to the **Home** tab.



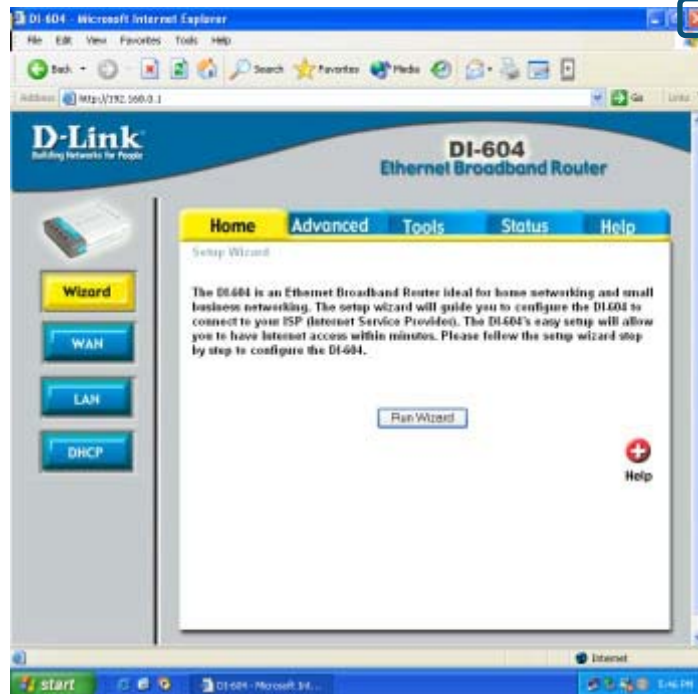
# 6

## Test Your Internet Connection

Click **Exit**

**Relaunch** your Web browser (i.e., *Internet Explorer* or *Netscape Navigator*), to link to your favorite Web site to test your Internet connection.

For additional settings or information, refer to the **Advanced**, **Tools**, or **Status** tabs on the web-management interface; or to the manual located on the CD-ROM.



# APPENDIX

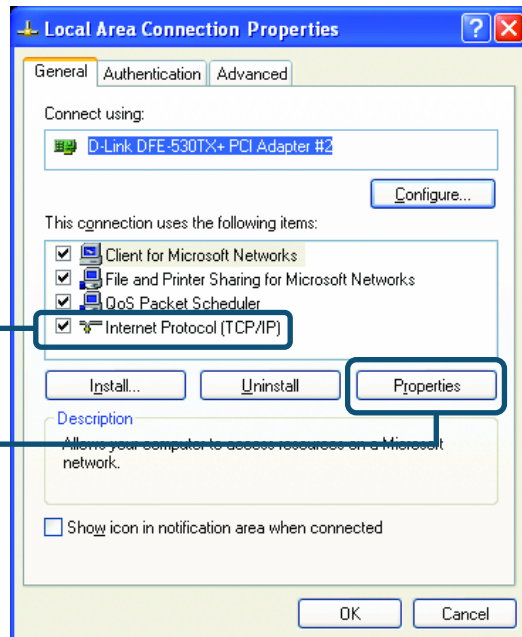
To connect to the network, make sure the network adapter in your computer is configured properly. Here's how to configure the network adapter to obtain an IP address automatically for the DI-604 Broadband Router.

For **Microsoft Windows XP**:  
Go to **Start > right click on My Network Places > select Properties > Double-click on the Network Connection** associated with the Ethernet adapter (i.e., D-Link DFE-530TX+).



Click **Internet Protocol (TCP/IP)**

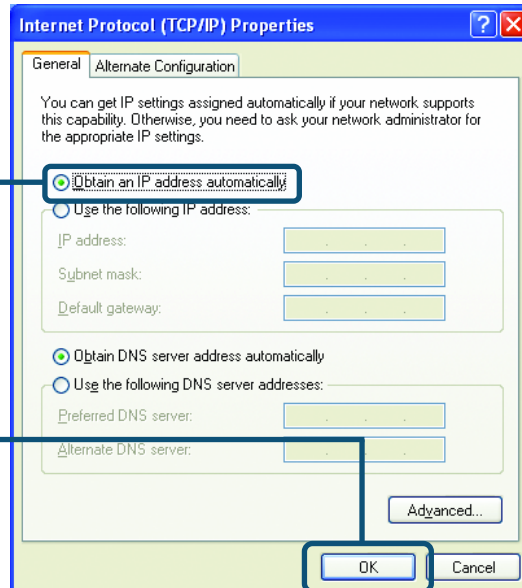
Click **Properties**



Select **Obtain an IP address automatically**

Click **OK**

**Restart your computer**



For **Apple Macintosh OS X:**

Go to the **Apple Menu**  
and **Select System**  
**Preferences.**

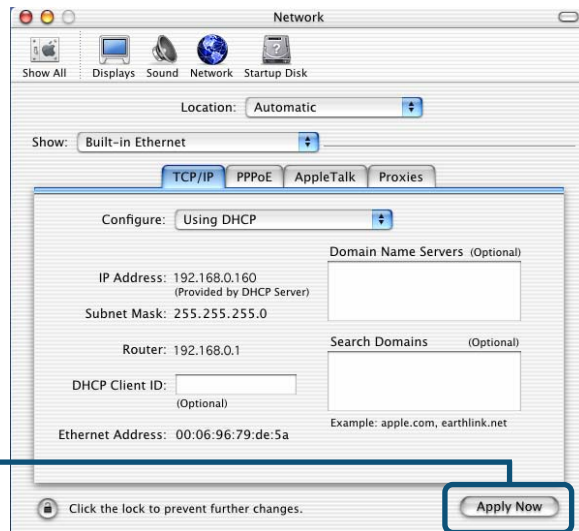
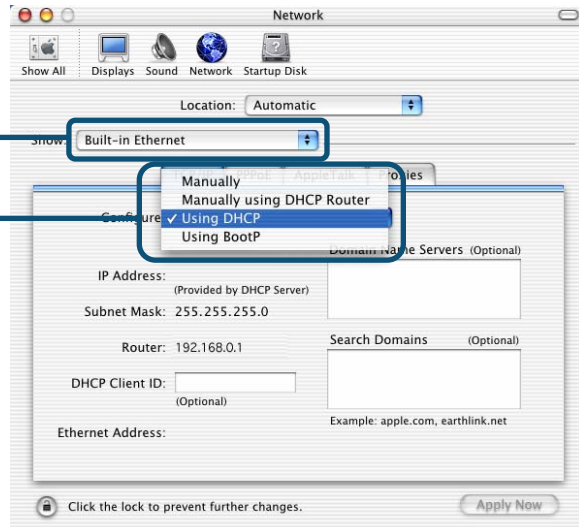
**Click on**  
**Network**

**Select Built-in**  
**Ethernet** in the Show  
pull-down menu

**Select Using DHCP**  
in the Configure pull-  
down menu

**Click on**  
**Apply Now**

The IP address information,  
the Subnet Mask, the Router's  
IP address and the Ethernet  
adapter address will appear.



## Technical Support

You can find software updates and user documentation on the D-Link website.

D-Link provides free technical support for customers within the United States and within Canada for the duration of the warranty period on this product.

U.S. and Canadian customers can contact D-Link technical support through our website, or by phone.

### Tech Support for customers within the United States:

***D-Link Technical Support over the Telephone:***

(877) 453-5465

24 hours a day, seven days a week.

***D-Link Technical Support over the Internet:***

<http://support.dlink.com>

[email:support@dlink.com](mailto:support@dlink.com)

### Tech Support for customers within Canada:

***D-Link Technical Support over the Telephone:***

(800) 361-5265

Monday to Friday 8:30am to 9:00pm EST

***D-Link Technical Support over the Internet:***

<http://support.dlink.ca>

[email:support@dlink.ca](mailto:support@dlink.ca)

