

Contents of Package:

DG-102S VoIP Station Gateway
Power adapter
CD-ROM, including User's Manual
Quick Install Guide

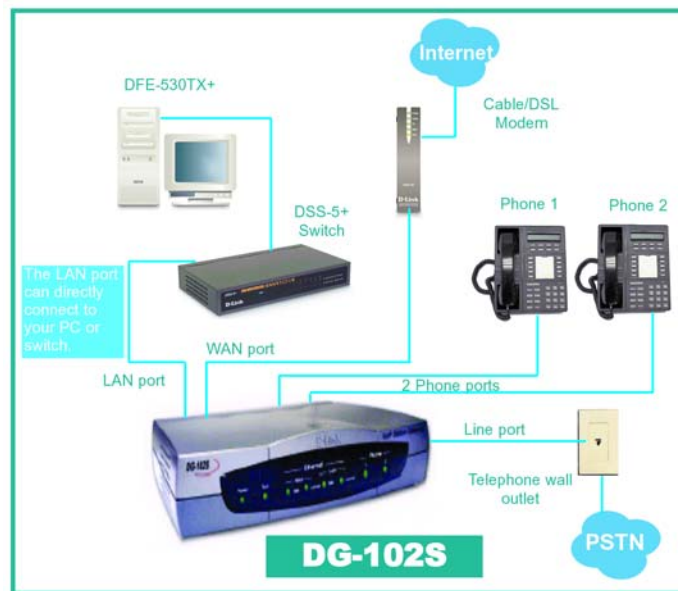
Requirements:

RS-232 Console Cable
Two RJ-45 CAT-5 Straight-Through Cables
For more information regarding cabling, please see the appendix at the back of this guide or refer to the User's Manual on the CD-ROM.

1

Connecting the DG-102S VoIP Gateway to your network

When you have completed the steps in this installation guide, your connected network may look similar to this:

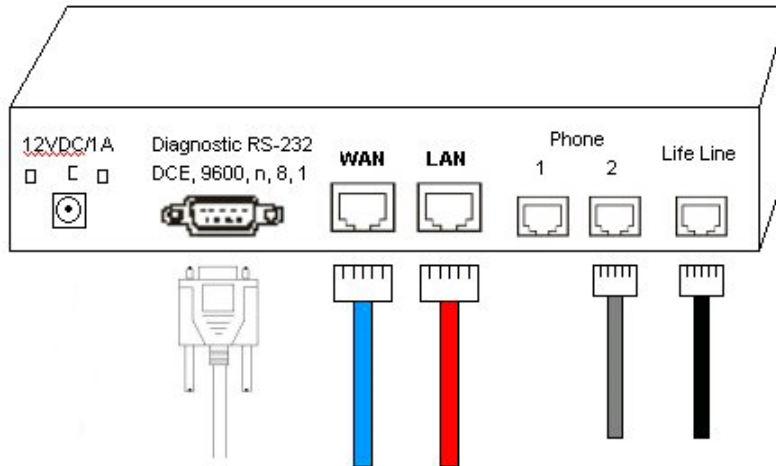


2

Starting with the **WAN** port, connect the Cable or DSL modem to the DG-102S WAN port using an Ethernet cable. Next, connect the PC or switch to the **LAN** port with another Ethernet cable. Then, connect your regular analog telephone(s) directly into either of the two **Phone** ports using RJ-11 phone cable. (Connect the **Line** port to a standard telephone wall outlet for PSTN Life Line Support)

Finally, plug one end of the RS-232 console cable to the DG-102S **Diagnostic RS-232** port and the other end to an available serial port on your computer.

(Do Not plug in the power adapter yet!)



3

On the same computer where the RS-232 console cable is connected to, open up a HyperTerminal screen by clicking on

**Start->Programs->
Accessories->
Communications->
HyperTerminal**



When the Connection Description screen appears, it will prompt for a “Name” for the New Connection. Enter any name you desire.



Click “OK”

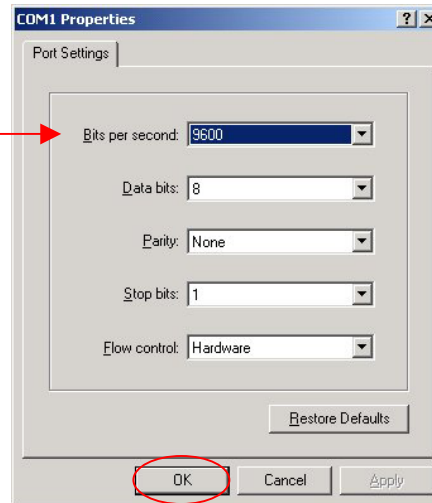
The next screen will ask how to connect. In the “Connect using” option, choose the COM port that is in use by the serial port which the RS-232 console cable is connected to.



Click “OK”

The COM port properties screen will then appear. Select 9600 as the “Bits per second:”

Bits per second: 9600
Data bits: 8
Parity: None
Stop bits: 1
Flow Control: Hardware

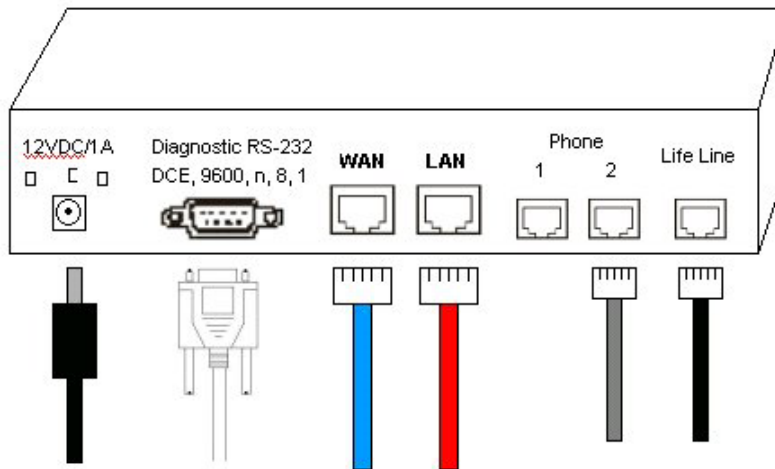


Click “OK”

There should now be an empty white HyperTerminal screen on your computer screen.

4

Plug in the power supply as shown.
The Power LED in the front panel will turn on to indicate proper operation.



5

After plugging in the power supply, the HyperTerminal screen should now display the following screen:

```
PROM Version: 1.00-B18   RUNTIME Version: 1.00-B37

D-Link DG-102S: Initializing Device OS
-----
* Getting DHCP information:
  (Requires a DHCP server....)
Press any key to by pass DHCP phase and continue booting device...
```

The HyperTerminal screen will prompt you to press any key. Press the **Space Bar** button on your keyboard to allow the DG-102S to finish the boot process. You should now see the DG-102S go through its POST (Power On Self Test).

At this point, you may close the HyperTerminal screen and move on to the next section.

Configuring the VoIP Gateway using a Web Browser

1

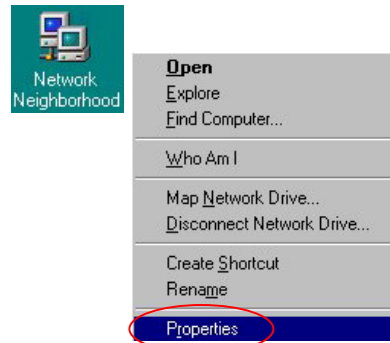
Setting Up a Connection

In order to use a web browser to configure the VoIP gateway, you must be sure it has a valid Ethernet connection from the PC to the LAN port. The VoIP gateway comes with a default LAN (Local Area Network) IP address of **192.168.0.1** and a subnet mask of **255.255.255.0**.

Make sure the PC is in the same IP range as the VoIP gateway. You can do this by changing the IP address of the PC.

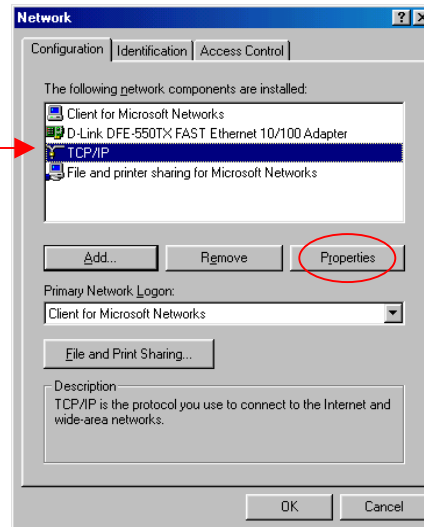
By default, the DG-102S is a DHCP Server. You can set your computer to obtain an IP address. Follow the below steps to do so. If you prefer, you can set your computer up with a static IP address in the range of 192.168.0.2 ~ 192.168.0.254.

Right-Click the **Network Neighborhood** (Win 98/98SE) or **My Network Places** (Win ME/2K/XP) icon on your desktop.

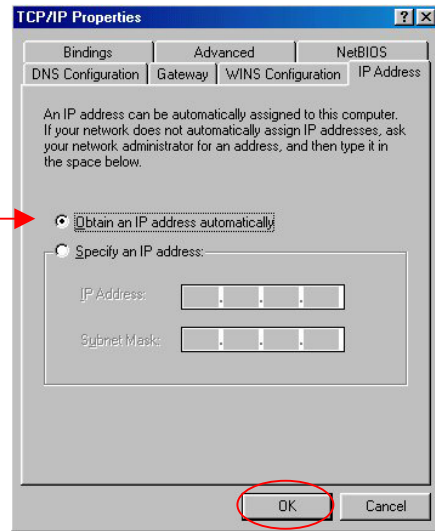


Select **“Properties”**

Highlight the **TCP/IP** setting for the installed Ethernet Network Adapter. Click **“Properties”**



At this screen, select the IP address tab. Select Obtain an IP Address Automatically.
Click "OK"

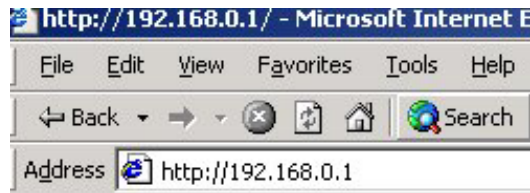


If you are prompted to restart your computer, please do so. When the computer restarts, it will automatically receive an IP address from the DG-102S.

2

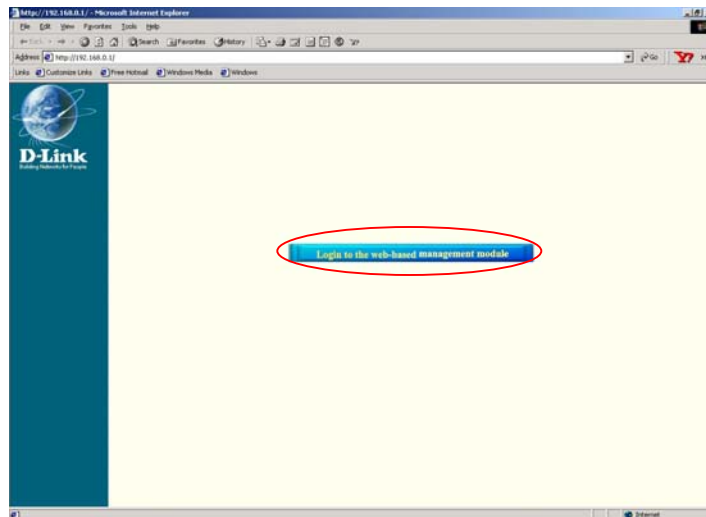
Please open the Web Browser and enter this URL:

<http://192.168.0.1>



Note: The DG-102S requires Internet Explorer 4.0 or higher, or Netscape Communicator 4.0 or higher.

The following screen should appear on the browser.



3

Click on the “*Login to the web-based management module*” button. The following pop-up window will be displayed:

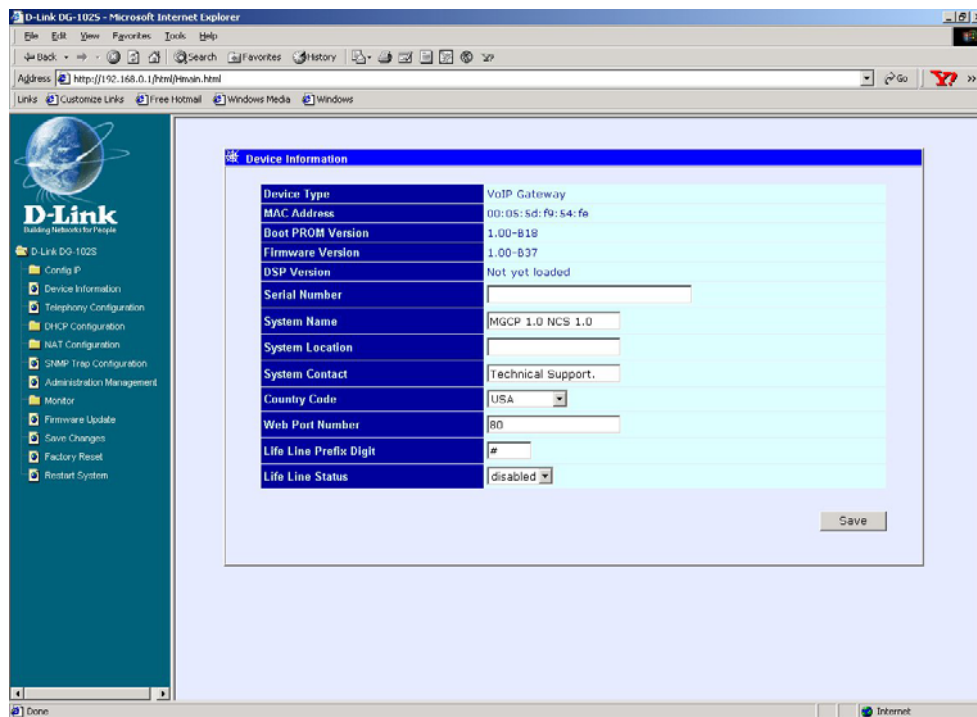


The dialog box titled "Enter Network Password" contains the following fields and controls:

- Site: 192.168.0.1
- Realm: (empty)
- User Name: (empty text box)
- Password: (empty text box)
- Save this password in your password list
- OK button (circled in red)
- Cancel button

By Default, the VoIP gateway does not have a **Username** or **Password**. To log in, simply click “**OK**”.

The following window will be displayed:



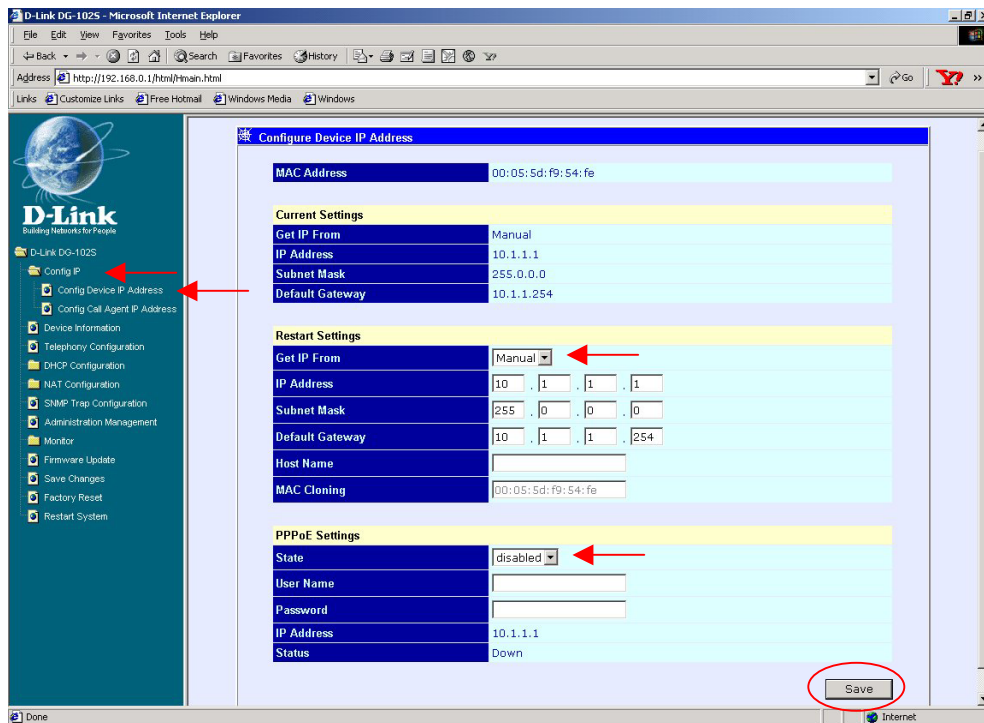
The screenshot shows the web management interface for a D-Link DG-1025 VoIP gateway. The left sidebar lists various configuration options, and the main content area displays the "Device Information" page.

Device Type	VoIP Gateway
MAC Address	00:0S:5d:F9:54:fe
Boot PROM Version	1.00-B19
Firmware Version	1.00-037
DSP Version	Not yet loaded
Serial Number	(empty text box)
System Name	MGCP 1.0 NCS 1.0
System Location	(empty text box)
System Contact	Technical Support.
Country Code	USA
Web Port Number	80
Life Line Prefix Digit	#
Life Line Status	disabled

A "Save" button is located at the bottom right of the Device Information table.

4

To begin configuring the device, click on the “**Config IP**” folder on the left-hand side menu. Then click on “**Config Device IP Address**” right below it. The following window will appear.



Restart Settings

- If you are assigned a static IP address by your ISP, choose “**Manual**” in the **Get IP From** option. Fill in the appropriate IP information provided to you by your ISP.
- If you are assigned to obtain an IP address, choose “**DHCP**” in the **Get IP From** option. Fill in the **Hostname** if required by your ISP.

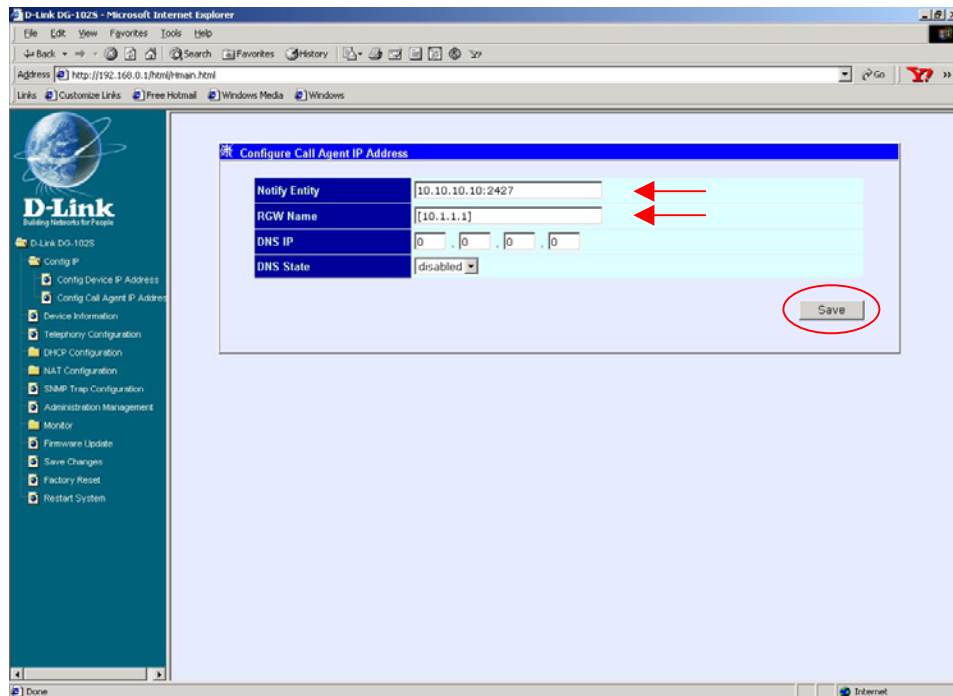
PPPoE Settings

- If you are assigned to use a PPPoE authentication, change the **State** option to “**Enabled**”. Please fill in the PPPoE **Username** and **Password** provided to you by your ISP.

Once you have filled in the appropriate information for your Internet connection, click on the “**Save**” button at the bottom-right.

5

Click on “**Configure Call Agent IP Address**”. Enter in the **Notify Entity** and **RGW Name** provided to you by your ISP.



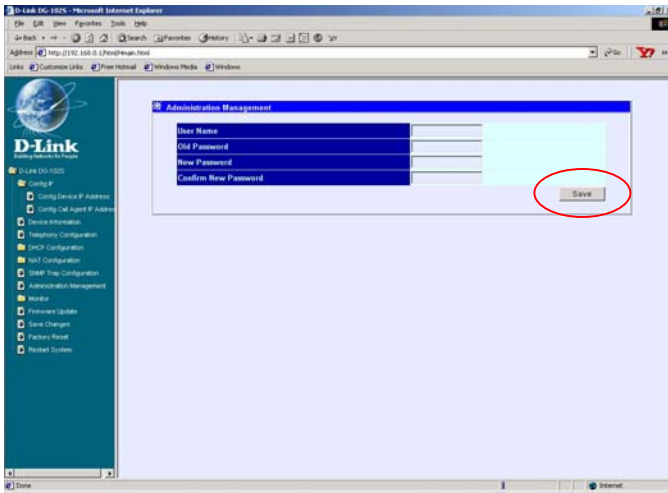
6

Administration Management

For security purposes, it is recommended that you create an administrator account for the DG-102S. This account will be used to login to the DG-102S web-interface for configuration.

To add or change a User Account, fill in the appropriate information in the “**User Name**,” “**Old Password**” (if applicable), “**New Password**,” and “**Confirm New Password**” fields.

Click “Save”



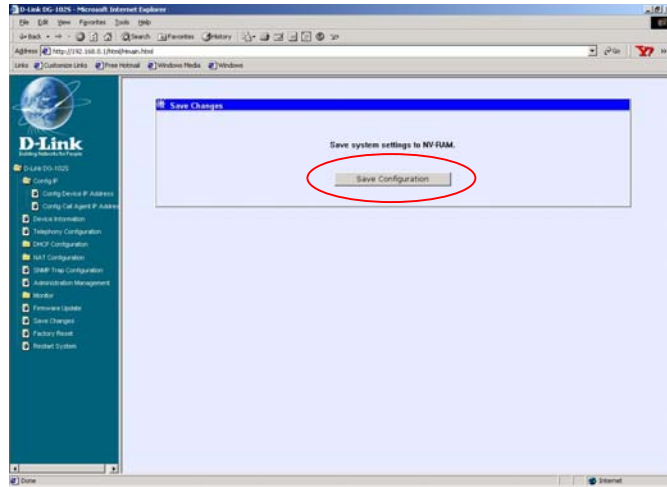
7

Save Changes

After the settings have been saved to NV-RAM, they will become the default settings for the device, and they will be used every time it is powered on, reset or rebooted. The only exception to this is a factory reset, which will clear all settings and restore them to their initial values, which were present when the device was purchased.

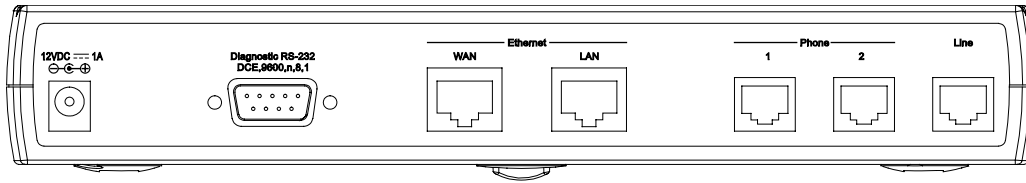
Click on “**Save Changes**” on the left-hand side menu. This window will appear prompting to save the configuration.

Click on the “**Save Configuration**” button to save the system settings to NV-RAM.



The DG-102S will save the changes and automatically restart.

Appendix



1. To connect your gateway (WAN port) directly to cable or DSL modem use **“Straight-through cable.”**
2. To connect your gateway (LAN port) directly to your computer or switch (Uplink port) use **“Straight-through cable.”**
3. A **“Serial cable”** is used to connect your PC to the gateway for “Command line Configuration.” (Please refer to the User’s Manual for more details.)
4. To connect your normal telephones directly to your gateway (Phone ports) using **“RJ-11 phone cable”**. (The third port on the right labeled “Line” is for PSTN Life Line function. It’s for connecting to a standard telephone wall outlet through an approved No. 26 AWG or larger telecommunications line cord.)

D-Link[®]
Building Networks for People