

D-Link Quick Installation Guide

This product can be set up using any current Web browser, i.e., Internet Explorer 6 or Netscape Navigator 6 or above.



DFL-700
NETDEFEND™ Network
Security Firewall

Before You Begin

If you purchased this Network Security Firewall to connect to your high-speed Internet connection in a secure manner, you must have either an Ethernet-based Cable or DSL modem with an established Internet account from an Internet Service Provider (ISP).

Check Your Package Contents

These are the items included with your DFL-700 purchase:



DFL-700 NETDEFEND™ Network Security Firewall



CD-ROM (containing Manual and Warranty)



Ethernet (CAT5 UTP/Straight-Through) Cable



Console Cable (RS-232)



5V DC Power Adapter



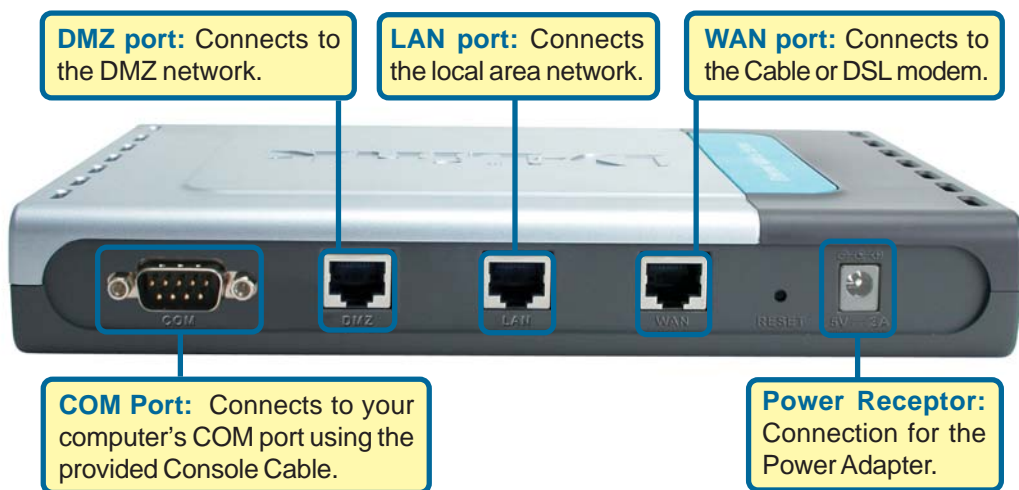
Using a power supply with a different voltage rating will damage this product and void its warranty.

If any of the above items are missing, please contact your reseller.

1

Connecting The DFL-700 Network Security Firewall To Your Network

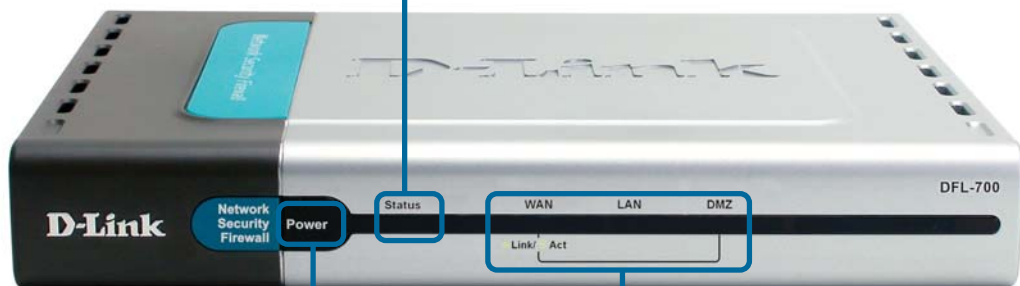
- A. Connect the power adapter to the **receptor** on the back panel of the DFL-700 and then plug the other end of the power adapter to a wall outlet or power strip. The Power LED will turn **ON** to indicate proper operation.
- B. Power off your Cable or DSL modem; some devices may not have an on/off switch and will require you to unplug the power adapter. Now, the DFL-700 should be powered on and the Cable / DSL modem should be turned off.
Cable / DSL modem (**Power Off**) – DFL-700 (**Power On**)
- C. Attach an Ethernet cable to the Ethernet jack located on the Cable / DSL modem. After the Ethernet cable is securely connected, power on the Cable / DSL modem by turning on the unit or plugging in the power adapter.
Cable / DSL modem (**Power On**) – DFL-700 (**Power On**)
- D. Attach the other end of the Ethernet cable to the **WAN port** on the back panel of the DFL-700. The WAN LED light will illuminate to indicate proper connection. If the WAN LED is not illuminated, please go back to step B and repeat the steps.
- E. Attach an Ethernet cable in the **LAN port** on the back panel of the DFL-700 and connect it to a port on your network hub or switch. The LED light for the LAN port on the DFL-700 will illuminate to indicate proper connection.
- F. Connect the computer that you will use to configure the DFL-700 to the network hub or switch.



1

Connecting The DFL-700 Network Security Firewall To Your Network (continued)

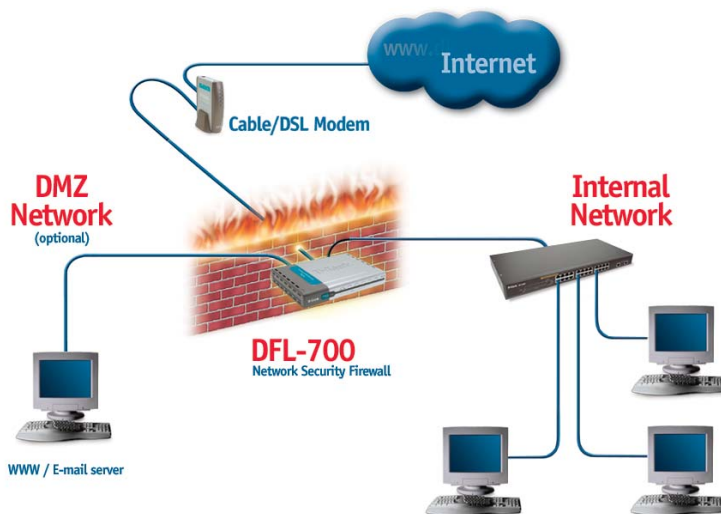
STATUS LED: Flashes consistently to indicate that the DFL-700 is working properly.



POWER LED: A solid light indicates a proper connection to the power supply.

NETWORK LEDs: A solid light on the port indicates a good connection. The LEDs blink during data transmission.

When you have completed the steps in this *Quick Installation Guide*, your connected network should look similar to this:



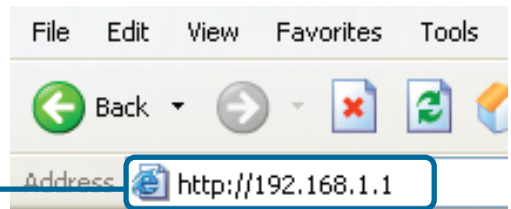
2

Using The Setup Wizard

To obtain a new IP address from the DFL-700 you may need to restart your computer or release and renew your IP address. First make sure that the network adapter in your computer is configured properly. Instructions for configuring the network adapter to obtain an IP address automatically from the DFL-700 can be found in the Appendix.

The DFL-700 provides Web based configuration. You can configure your DFL-700 using a Web browser such as Internet Explorer or Netscape Navigator in Windows, Macintosh, or UNIX based environments.

Open your Web browser and type **http://192.168.1.1** into the URL address box. Then press the **Enter** or **Return** key.



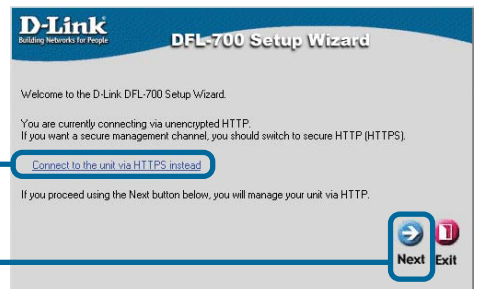
(The IP Address shown in the example above is the default setting. If you've changed the IP Address of the DFL-700 to conform to a network then input that IP Address instead of the default IP Address.)

Welcome to the DFL-700 connection wizard!

Here you can choose to either configure your firewall over HTTP or over Secure HTTP (HTTPS).

Click on **Connect to the unit via HTTPS instead** to use Secure HTTP

Click **Next** to keep using HTTP



2

Using The Setup Wizard (continued)

Step 1 - Set admin password

Enter the password that you want to use for the admin account.

Click **Next**

D-Link
Building Networks for People

DFL-700 Setup Wizard

D-Link DFL-700 Setup Wizard, Step 1 - Set admin password

Please enter a password for protecting the administrative interface of the unit.

Username: admin

Password:

Retype password:

Note that the password is case sensitive, and that you should pick a password that contains upper- and lowercase letters as well as numbers and/or special characters.

Back Next Exit

Step 2 - Set timezone

Select the appropriate timezone

Enter the appropriate daylight saving time settings.

Click **Next**

D-Link
Building Networks for People

DFL-700 Setup Wizard

D-Link DFL-700 Setup Wizard, Step 2 - Set timezone

Select the appropriate time zone and click Next to continue.

(GMT+01:00) Amsterdam, Berlin, Bern, Rome, Stockholm, Vienna

Daylight saving time settings:

☐ No daylight saving time

☒ Apply daylight saving time from: Mar 29 to Oct 28

Back Next Exit

Step 3 - Configure WAN interface

Select the appropriate configuration for the WAN interface.

Click **Next** and continue to step 4.



If unsure of which setting to select, contact your Internet Service Provider.

Click **Next**

D-Link
Building Networks for People

DFL-700 Setup Wizard

D-Link DFL-700 Setup Wizard, Step 3 - Configure WAN interface

Select the appropriate configuration type of the internet-facing (WAN) interface. Your ISP normally tells you which type to use.

☒ **Static IP** - manual configuration
Most commonly used in dedicated-line internet connections. Your ISP provides the IP configuration parameters to you.

☐ **DHCP** - automatic configuration
Regular ethernet connection with DHCP-assigned IP address. Used in many DSL and cable modem networks. Everything is automatic.

☐ **PPPoE** - account details needed
PPP over Ethernet connection. Used in many DSL and cable modem networks. After providing account details, everything is automatic.

☐ **PPTP** - account details needed
PPTP over Ethernet connection. Used in some DSL and cable modem networks. You need account details, but also IP parameters for the physical interface that the PPTP tunnel runs over.

☐ **Big Pond** - account details needed
Regular ethernet connection with DHCP-assigned IP address, plus authentication via a special protocol. Used by the ISP "Big Pond".

Back Next Exit

2

Using The Setup Wizard (continued)

Step 3 - Static IP

Enter the IP address information provided to you by your Internet Service Provider. You will need to complete all the required fields except for Secondary DNS Server.

Click **Next** and continue to step 4

D-Link
Building Networks For People

DFL-700 Setup Wizard

D-Link DFL-700 Setup Wizard, Step 3 - Configure WAN interface

Static WAN interface configuration is most commonly used in dedicated-line internet connections. Your ISP usually provides this information to you.

IP Address:

Subnet Mask: - 256 hosts (/24)

Gateway IP:

Primary DNS Server:

Secondary DNS Server: (optional)

Click **Next**

Step 3 - PPPoE

Fill out the user name and password provided to you by your Internet Service Provider. The PPPoE Service Name field should be left blank unless your ISP informs you otherwise.

Click **Next** and continue to step 4

D-Link
Building Networks For People

DFL-700 Setup Wizard

D-Link DFL-700 Setup Wizard, Step 3 - Configure WAN interface

PPP over Ethernet connections are used in many DSL and cable modem networks. After authenticating, everything is automatic.

Username:

Password:

Retype Password:

Service Name: (Some ISPs require the Service Name to be filled out.)

Click **Next**

2

Using The Setup Wizard (continued)

Step 3 - PPTP

Specify both **PPTP** tunnel parameters and **Physical interface** parameters.

PPTP tunnel parameters:

Enter the Username, Password and the PPTP Server IP address provided by your ISP.

Physical interface parameters.

DHCP: If your Internet Service Provider is using DHCP you should select the DHCP radio button.

Static IP: If your Internet Service Provider is using Static IP you should select the Static IP radio button and enter IP Address, choose a Subnet Mask and enter the Gateway IP address.

Click **Next**

D-Link
Building Networks For People

DFL-700 Setup Wizard

D-Link DFL-700 Setup Wizard, Step 3 - Configure WAN interface

PPTP over Ethernet connections are used in some DSL and cable modem networks. You need account details, and possibly also IP configuration parameters of the actual physical interface that the PPTP tunnel runs over. Your ISP should supply this information.

PPTP tunnel parameters:

Username:

Password:

Retype Password:

PPTP Server IP:

Physical interface parameters:

☒ **DHCP** - automatic configuration
Everything is automatic.

☐ **Static IP** - manual configuration
Your ISP should provide this information to you.

IP Address:

Subnet Mask: - 256 hosts (/24)

Gateway IP:

This may or may not be necessary, depending on the ISP.

Step 3 - Big Pond

Fill out the user name and password provided to you by your ISP.

Click **Next** and continue to step 4

Click **Next**

D-Link
Building Networks For People

DFL-700 Setup Wizard

D-Link DFL-700 Setup Wizard, Step 3 - Configure WAN interface

Regular ethernet connection with DHCP-assigned IP address, plus authentication via a special protocol. Used by the ISP "Big Pond".

Username:

Password:

Retype Password:

☒ **Static IP** - manual configuration

2

Using The Setup Wizard (continued)

Step 4 - Set up built-in DHCP server

If you want to use the DFL-700's built-in DHCP Server, choose **Enable DHCP Server** from this screen. You then need to specify a range of IP addresses to assign the DHCP clients. The range is entered in the format "Start IP – Stop IP" i.e. 192.168.0.100 – 192.168.0.200. If you don't want to use the built-in DHCP Server or want to configure it later, choose **Disable DHCP Server** and click **Next**.

D-Link
Building Networks For People

DFL-700 Setup Wizard

D-Link DFL-700 Setup Wizard, Step 4 - Set up built-in DHCP server

You may enable the built-in DHCP server so that the gateway can hand out IP addresses to clients on the LAN via the DHCP protocol.

☐ Disable DHCP Server

☒ Enable DHCP Server

Enter a range of IP addresses to hand out to DHCP clients:

IP Range:

Back Next Exit

Click **Next**

Step 5 - Configure helper servers

NTP Servers - If enabled, specifies which NTP Servers should be used for time synchronization.

Syslog Servers – If enabled, specifies the servers where system log data is sent.

D-Link
Building Networks For People

DFL-700 Setup Wizard

D-Link DFL-700 Setup Wizard, Step 5 - Configure helper servers

☒ Time servers - for automatically keeping the unit's time accurate

Primary NTP Server:

Secondary NTP Server: (optional)

☒ Syslog servers - for receiving log data from the unit

If both servers are configured, logs will be sent to both at the same time.

Syslog server 1:

Syslog server 2: (optional)

Back Next Exit

Click **Next**

Setup Wizard Complete

Click **Restart** to complete your configuration.

D-Link
Building Networks For People

DFL-700 Setup Wizard

D-Link DFL-700 Setup Wizard Complete

Click Restart to finalize the configuration.

After the restart, the unit should be fully operational and use a basic firewall policy that allows nearly everything from the inside and out, and nothing in the opposite direction.

Back Restart Exit

Click **Restart**

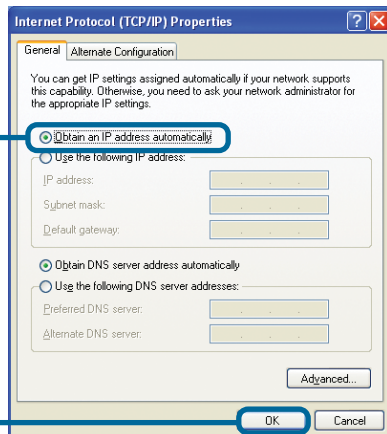
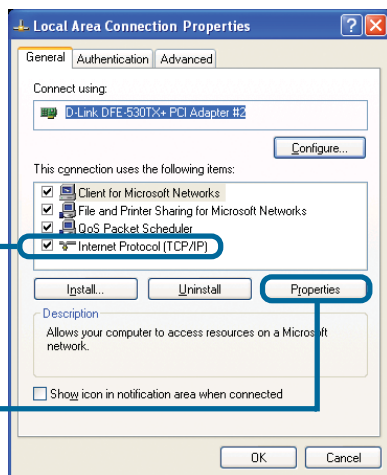
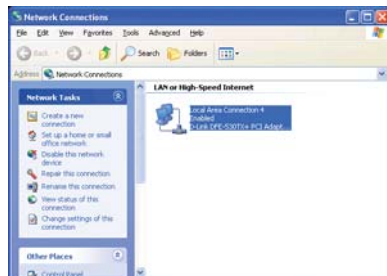
Appendix - IP Configuration

To connect to the network, make sure the network adapter in your computer is configured properly. Here's how to configure the network adapter to obtain an IP address automatically from the DFL-700 Network Security Firewall.

Microsoft Windows XP:

Go to **Start > right click on**

My Network Places > select Properties > Right-click on the **Network Connection** of the Ethernet adapter connecting to the DFL-700 and select Properties.

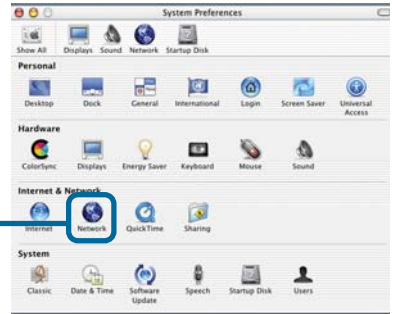


Appendix - IP Configuration (continued)

Apple Mac OS X:

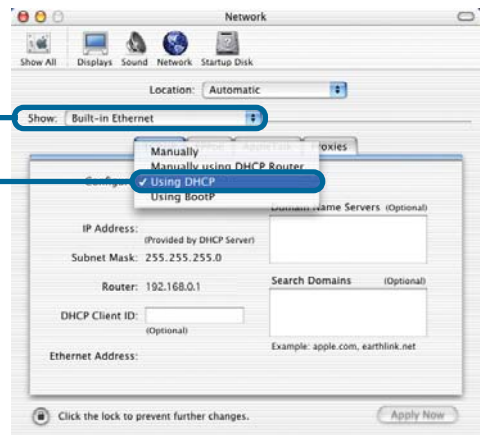
Go to the **Apple Menu** and **Select System Preferences**. Click on **Network**.

Click on
Network



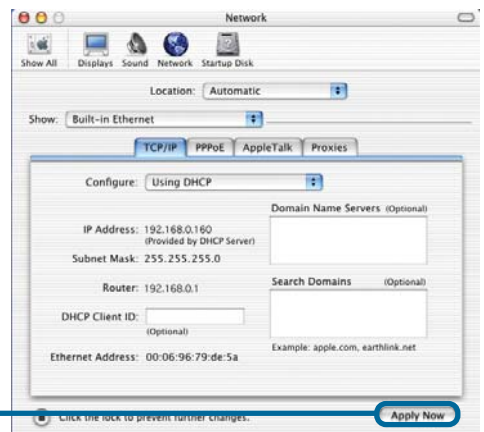
Select **Built-in Ethernet** in the show pull down menu

Select **Using DHCP** in the Configure pull down menu



The IP address information, the Subnet Mask, the DFL-700 IP address and the Ethernet adapter address will appear.

Click on **Apply Now**



Notes

Technical Support

You can find software updates and user documentation on the D-Link website.

D-Link provides free technical support for customers within the United States and within Canada for the duration of the warranty period on this product.

U.S. and Canadian customers can contact D-Link technical support through our website, or by phone.

Tech Support for customers within the United States:

D-Link Technical Support over the Telephone:

(877) 453-5465
6am-6pm PST, Mon-Fri.

D-Link Technical Support over the Internet:

<http://support.dlink.com>
email: support@dlink.com

Tech Support for customers within Canada:

D-Link Technical Support over the Telephone:

(800) 361-5265
Monday to Friday 8:30am to 9:00pm EST

D-Link Technical Support over the Internet:

<http://support.dlink.ca>
email: support@dlink.ca

