

DCM-202 Software 2.0.1 Loading Process

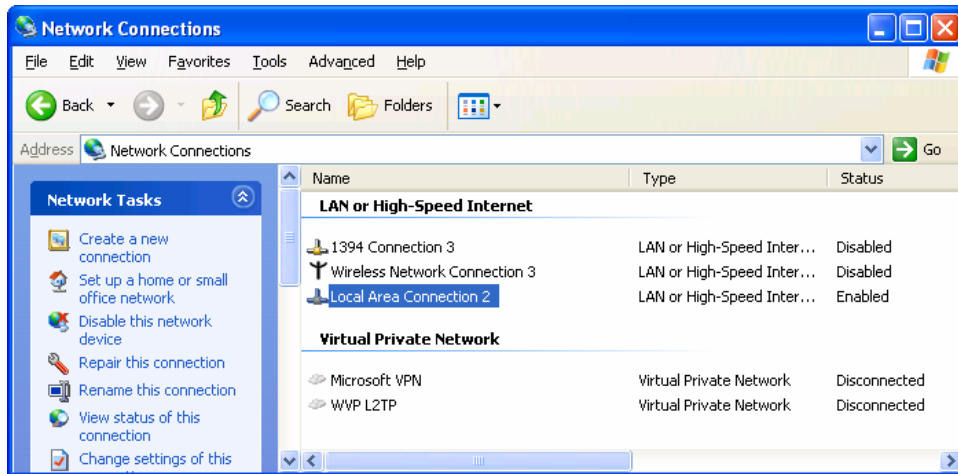
Copying Files:

Be sure to save the attached files to a temp directory:

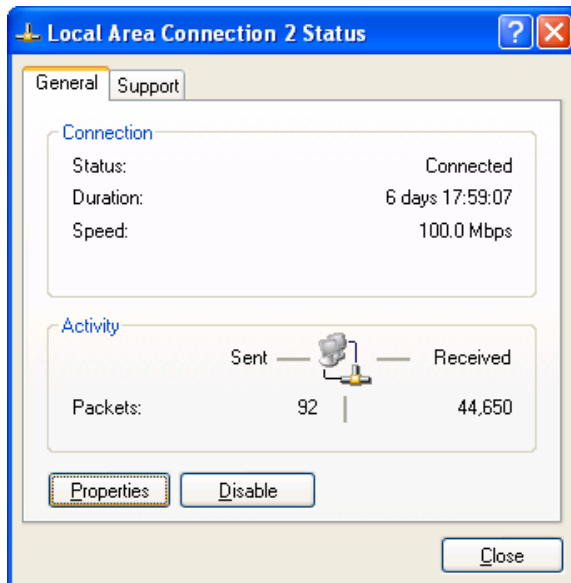
Hitr252.bin and DLinkTFTPServer_10.exe (i.e. C:\temp)

Configurations and Software Loading Steps:

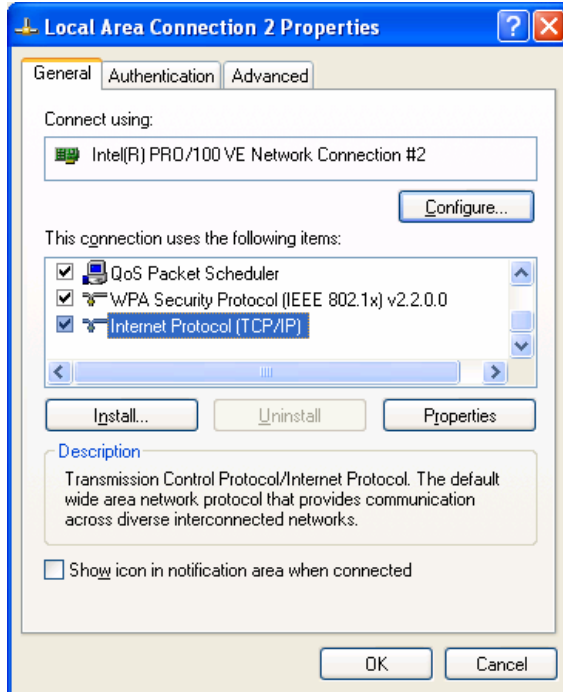
1. Go to Start → Control Panel → Click on Network Connections → Double click on Local Area Connection.



2. In Local Area Connections Status page, select Properties.



3. Under the General Tab, select Internet Protocol (TCP/IP). Then click on Properties.



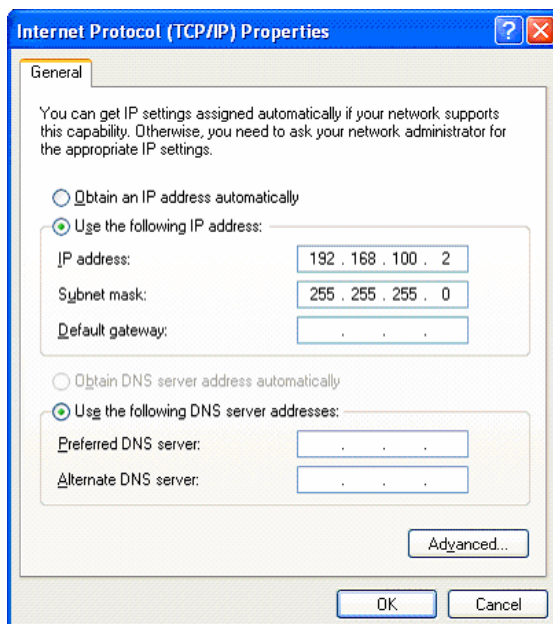
4. In the Internet Protocol (TCP/IP) Properties, select Use the following IP address.

Fill in the following information:

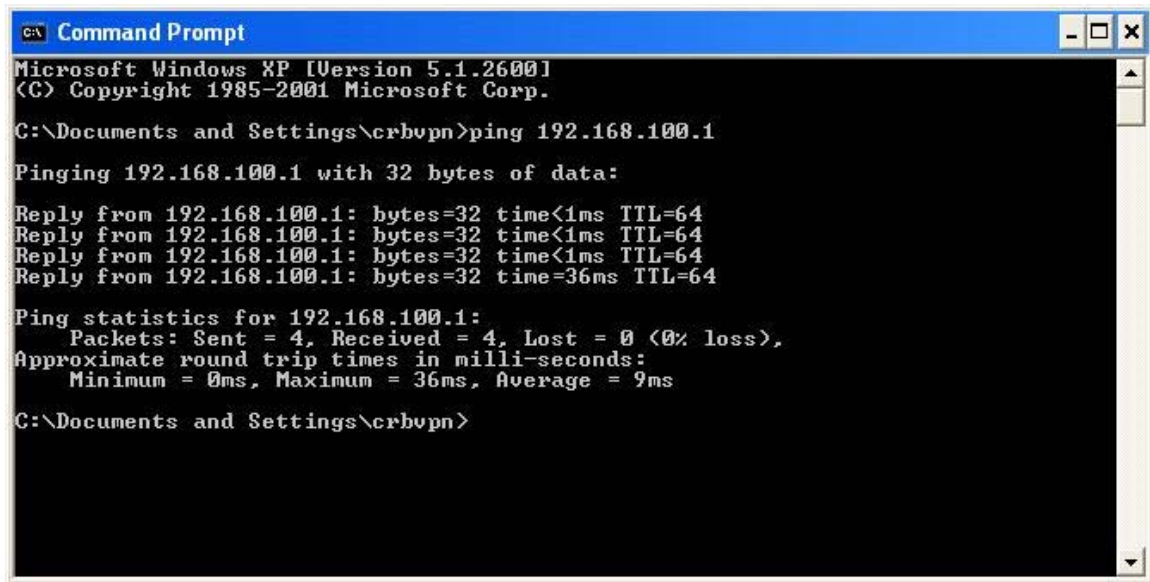
IP Address: 192.168.100.2

Subnet Mask: 255.255.255.0

Click OK to set the IP address on to the computer.



5. After Static IP configuration has taken place, go to Start → Run → cmd. This will take you to the DOS mode. There, ping the modem by typing the following command: ping 192.168.100.1. This is to validate the connection between the computer and the modem.



```
C:\ Command Prompt
Microsoft Windows XP [Version 5.1.2600]
(C) Copyright 1985-2001 Microsoft Corp.

C:\Documents and Settings\crbvnp>ping 192.168.100.1

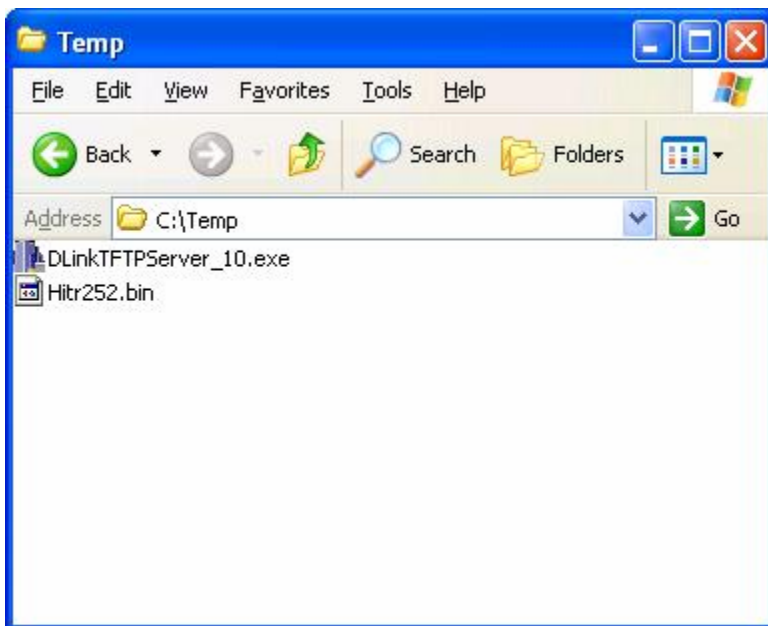
Pinging 192.168.100.1 with 32 bytes of data:

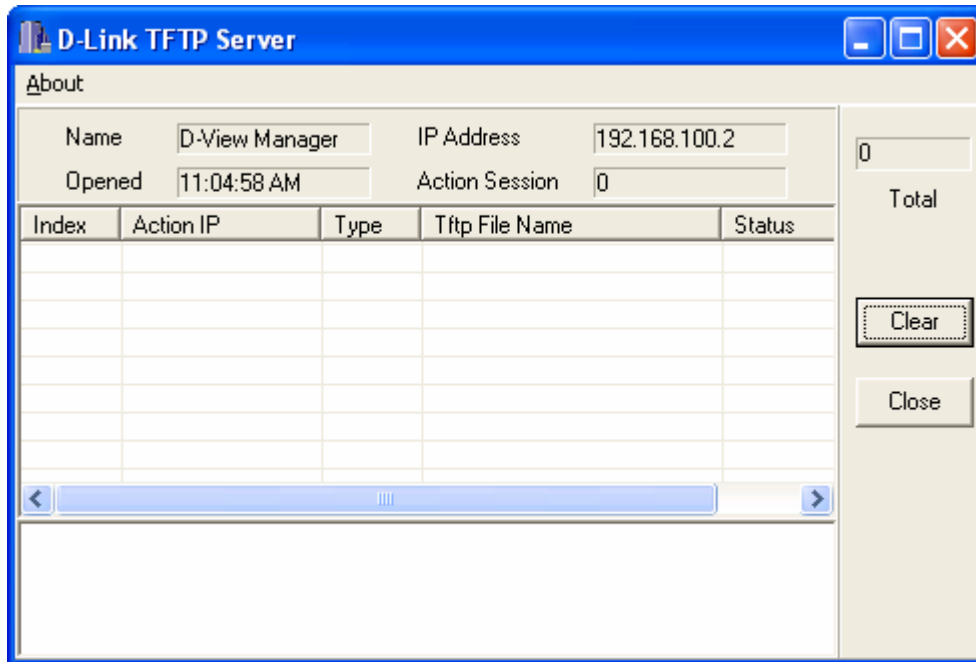
Reply from 192.168.100.1: bytes=32 time<1ms TTL=64
Reply from 192.168.100.1: bytes=32 time<1ms TTL=64
Reply from 192.168.100.1: bytes=32 time<1ms TTL=64
Reply from 192.168.100.1: bytes=32 time=36ms TTL=64

Ping statistics for 192.168.100.1:
    Packets: Sent = 4, Received = 4, Lost = 0 (0% loss),
    Approximate round trip times in milli-seconds:
        Minimum = 0ms, Maximum = 36ms, Average = 9ms

C:\Documents and Settings\crbvnp>
```

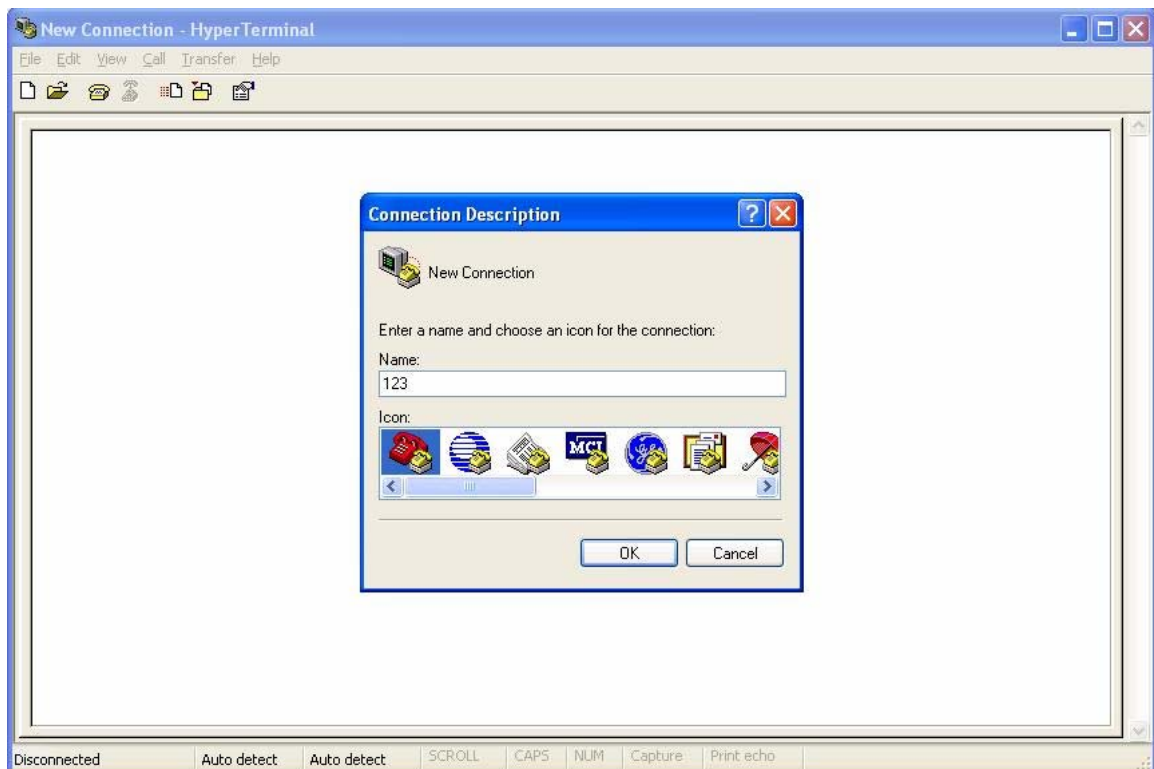
6. Start the TFTP server program (DLinkTFTPServer_10.exe). Be sure to keep all the files in the same folder (i.e. C:\Temp)





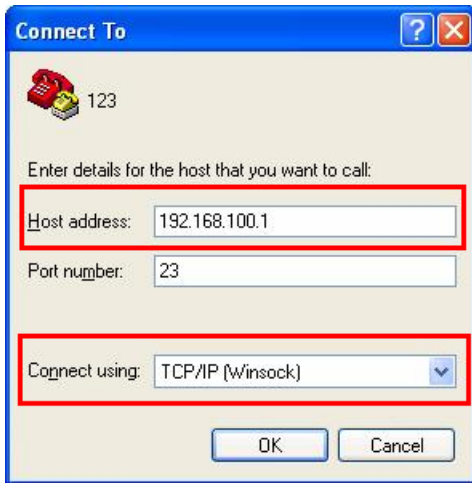
Keep D-Link TFTP Server program running in the background. This will allow users to see the progress of the download.

7. Go to Start → All Programs → Accessories → Communications → Hyper Terminal.

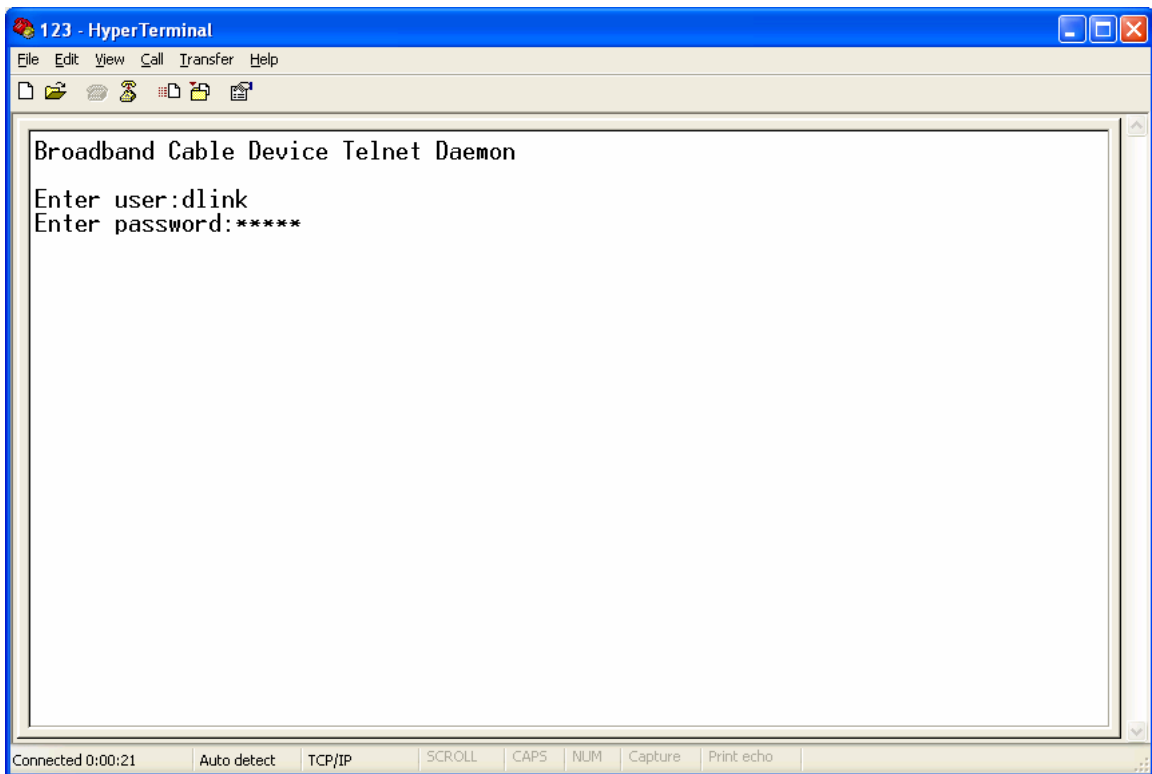


Type in 123 in the Name field and click OK.

8. First, select Connect using and set it to TCP/IP (Winsock). Second, set the Host address to 192.168.100.1 and click OK.

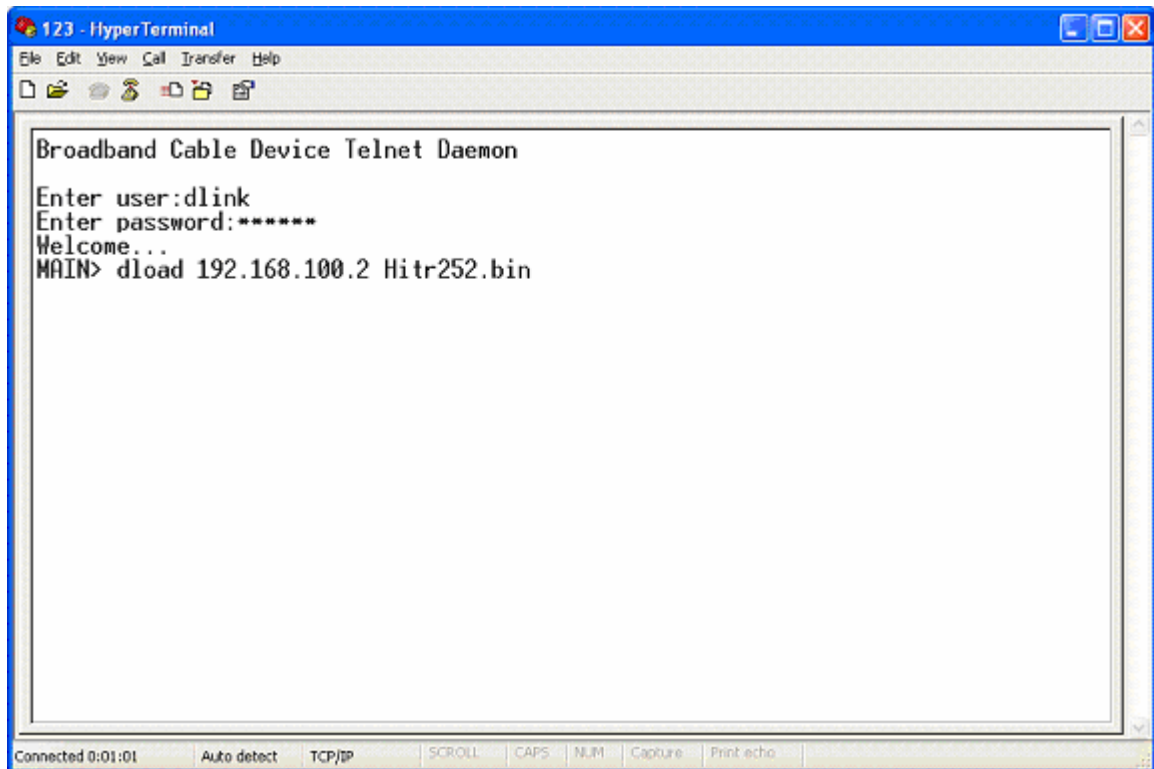


9. In the Hyper Terminal session, enter the user as **dlink** and password as **dlink** and press enter.



10. After logging in, in the MAIN> field, type the following command: dload 192.168.100.2 Hitr252.bin and press enter.

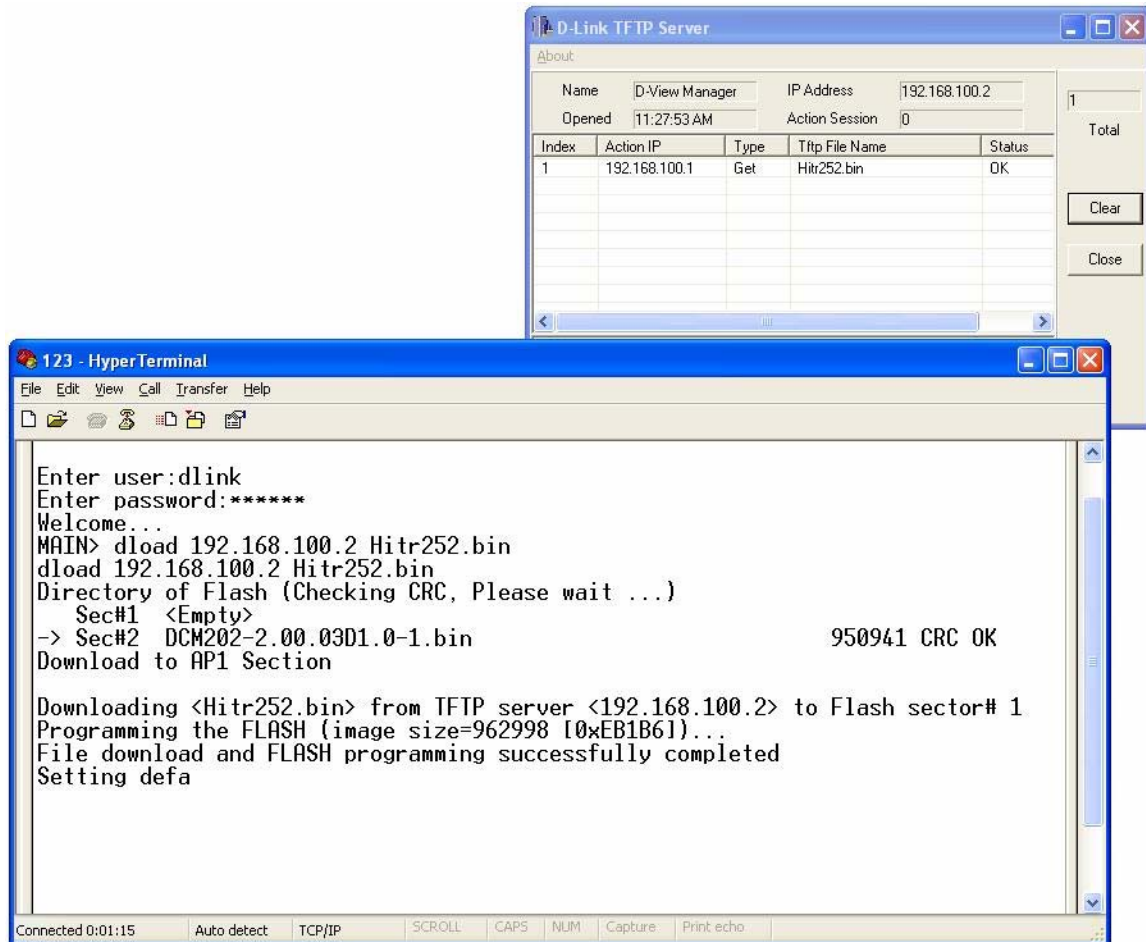
Please note that the 192.168.100.2 is the static IP set to the computer being used to upload the software.



```
123 - HyperTerminal
File Edit View Call Transfer Help
Broadband Cable Device Telnet Daemon
Enter user:dlink
Enter password:*****
Welcome...
MAIN> dload 192.168.100.2 Hitr252.bin
Connected 0:01:01 Auto detect TCP/IP SCROLL CAPS NUM Capture Print echo
```

11. The TFTP server will show that the file has been transferred. After the software loading finishes, the modem will restart. After it restarts, the Power light will be on, Cable light will be blinking amber, the Ethernet LED will not show.

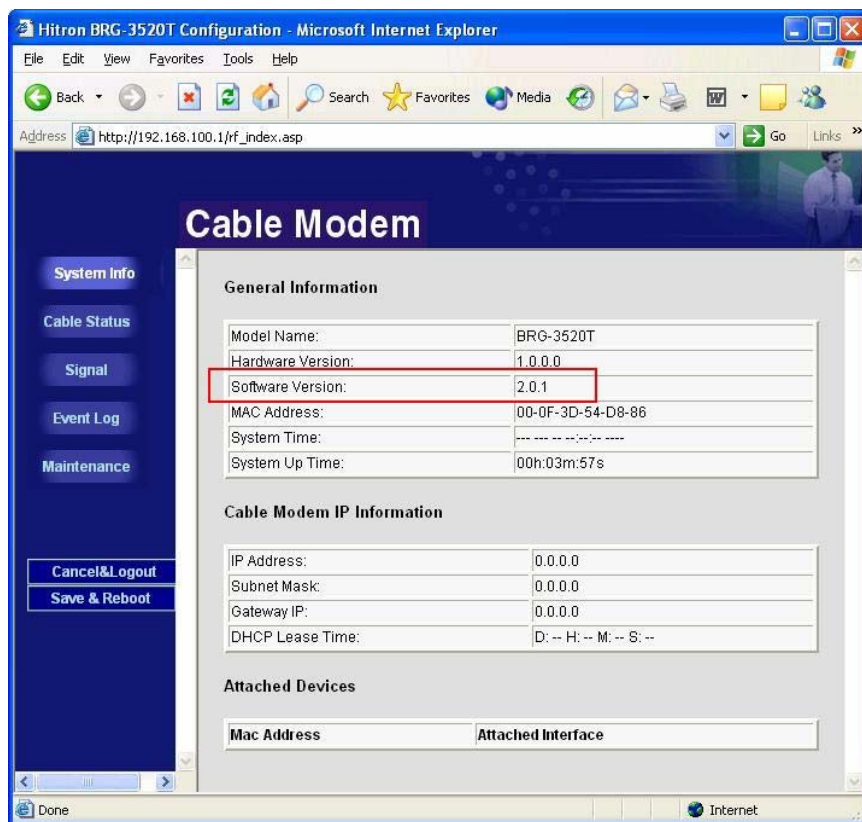
Note: The Ethernet light will come on, once the modem is connected to the High-Speed Cable Internet Service Provider.



12. Please perform another reset to make sure there is no file cached the flash memory of the modem. To do the factory reset, press the reset button (with a pin or paper clip) located on the back of the modem for about 7 seconds.

13. To verify that the correct software has been loaded, open up a web browser and type in the following address: 192.168.100.1. The user name will be **admin** and password will be **hitron**.





Now the software uploading process is complete.