



***DSL 504/CZ
ADSL Router
Quick Install Guide***

This guide is for installation only. For more detailed information regarding the product and its features, please refer to the user manual located on the included CD-ROM.

Before you begin:

1. *Make sure that an Ethernet NIC is installed and functioning in your PC. (Follow all installation instructions provided by the manufacturer.)*
2. *If you have had a service technician install your DSL line, please skip to Step 4: "Connecting the DSL-504/CZ." If you are installing DSL yourself, please follow all instructions.*

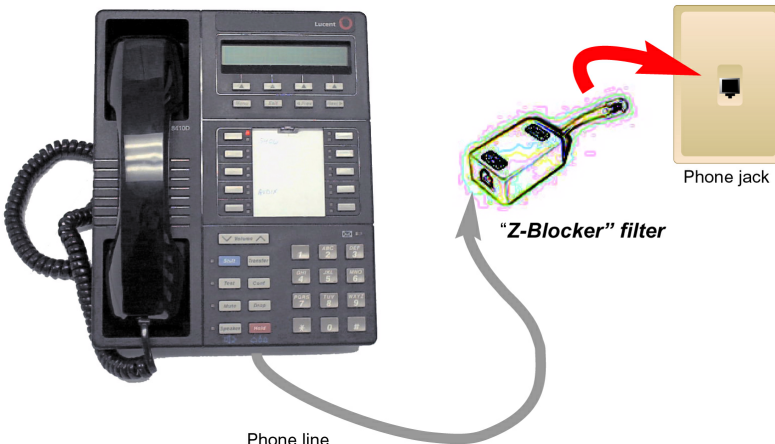
1

Install a "Z-Blocker" phone filter at **EACH telephone wall jack in your home.**

Q: *Why do I need these filters?*

A: *DSL service shares the line with your regular telephone service. In-line filters prevent these services from interfering with each other, improving both the telephone audio and DSL data rate.*

- Disconnect the existing cord from the wall jack.
- Plug the LINE end of the filter into the wall jack.
- Plug the device into the PHONE jack on the filter.
- Use only one filter for all devices sharing the jack.



2

Sharing your phone jack with the modem and another device.

If you would like to share your phone jack with the modem and your phone, then use a standard 2-line adapter.

- Install the 2-line adapter into the wall jack.
- Plug the RJ-11 cable into one adapter jack.
- Plug the LINE end of a “Z-Blocker” filter into the other adapter jack.
- Plug your telephone devices into the PHONE jack on the “Z-Blocker” filter.



3

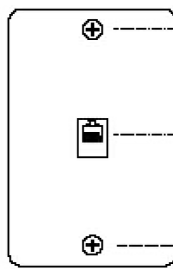
Installing the “Z-Blocker” filter on a wall-mounted telephone, using the wall-mount filter

- Remove the phone. On some phones you must pull out a locking lever before removing the phone. Then push up on the phone and pull it out from the wall.
- Slide the filter locking tabs (located at the top and bottom on the front of the filter) to the UNLOCKED position.
- Place the filter over the existing wall outlet, aligning the plug and mounting slots with the socket and mounting tabs on the existing outlet, then push into place.
- Move the locking tabs to the LOCKED position as indicated in the drawing.
- Mount the phone. If your phone has a locking lever, be sure it is unlocked before you mount it. Position the phone’s plug and mounting slots over the filter jack and metal mounting pegs. Press the phone in and pull down until secure.
- If desired, install your ADSL or Home Phoneline Network (HPN) device cord into the jack on the left side of the adapter. An answering machine may also be attached to the jack on the right side of the filter.

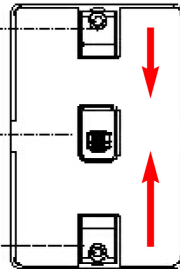
Wallmounted phone receiver



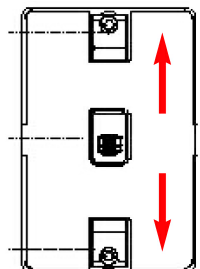
Before installing wallmount filter



After installing wallmount filter



Unlocked



Locked

Filter Installation Tips

- DO NOT install a filter on your DSL modem or on any broadband devices.
- Check the orientation of each filter
 1. PHONE jack towards the telephone device.
 2. LINE connection towards the wall jack.
- Try to limit the number of filters in your home to the fewest practical. Do this by
 1. Using one filter to isolate several devices.
 2. Not installing filters on unused phone jacks.
- Do not use more than one filter for each telephone device or group of devices.
- Plug the filter directly into the wall jack using only the attached short cord. If this cannot be done, then use a twisted-pair cable like the data cable for the modem (i.e., NOT a flat phone cord) to connect the filter to the wall jack.

4

Connecting the DSL-504/CZ

To setup the DSL-504/CZ, begin by connecting it to a power source.



Once the unit power is on, connect one end of the included Ethernet cable to the DSL-504/CZ's ethernet port and connect the other end of the cable into the NIC which is installed in your computer.



If the cable connection is good, a green LED on the front of the DSL-504/CZ labeled Ethernet/Link will glow steadily.

4

Connecting the DSL-504/CZ *continued*

Now connect the phoneline cable from the DSL-504/CZ to your phone jack.

When you have completed all the connections, your DSL-504/CZ will look like this:



Power Cord

(Plug the other end of the power cord into the power outlet.)

Phone line cable

(Plug the other end of the phone line cable into the phone jack.)

Ethernet Cable

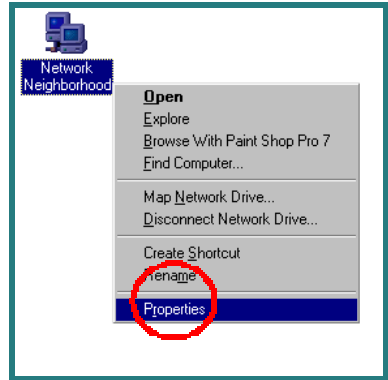
(Plug the other end of the Ethernet cable into the Ethernet port on the NIC, which is installed in your computer.)

5

Setting up the Computer

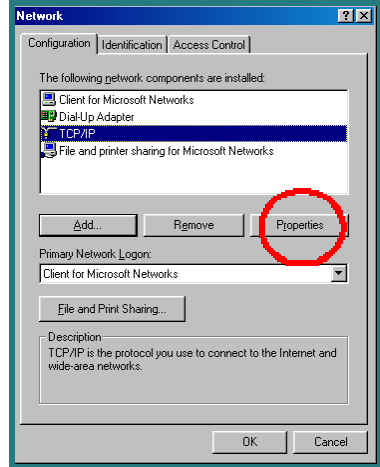
Right-Click the **Network Neighborhood** (Win 98/98SE) or **My Network Places** (Win ME/2000) icon on your desktop.

Click Properties



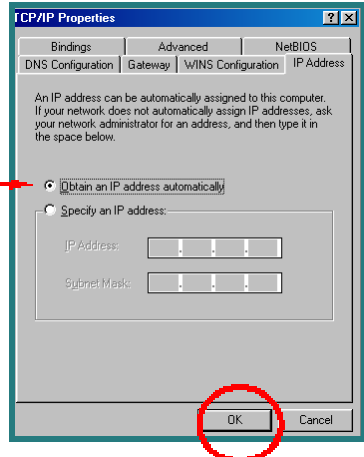
Highlight the line that reads **TCP/IP** and points to your installed Ethernet NIC.

Click Properties



At this screen, select the IP Address tab.
Select **Obtain an IP Address Automatically**.

Click OK



5

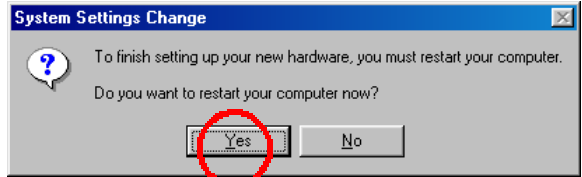
Setting up the Computer *continued*

You will be prompted to reboot in Win 98/98SE or ME.

For Windows 2000,

Restart your computer manually.

Click Yes



When your computer restarts, you will automatically receive an IP address from the DSL-504/CZ.

6

Accessing the DSL-504/CZ's Web Based Management

The DSL-504/CZ requires Internet Explorer 4.0 or higher, or Netscape Communicator 4.0 or higher.

Please open your Web Browser and enter this URL:

http://192.168.0.1 This will launch the DSL-504/CZ's integrated web-based management system.



Click on Login to the web-based management module.

Login to the web-based management module

This **Enter Network Password** screen will appear.

The default **User Name** is **admin** and the default **Password** is also **admin**.

Click OK



7

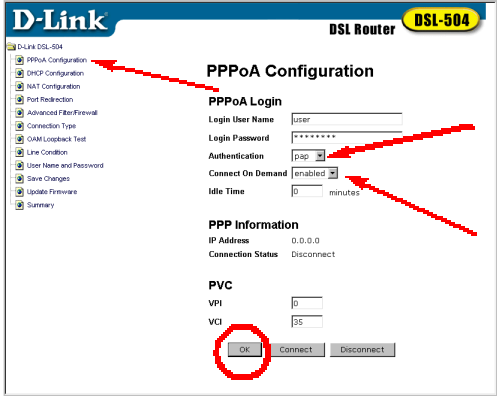
Configuring the DSL-504/CZ

Click **PPPoA Configuration** on **WAN** in the left column. Enter the **Login User Name** and **Password**, provided to you by your Internet Service Provider (ISP.)

Authentication is set to detect automatically. If your current selection does not work, select **“pap.”**

Please be certain that **“enabled”** is displayed in the **“Connect On Demand”** field.

Click **OK**



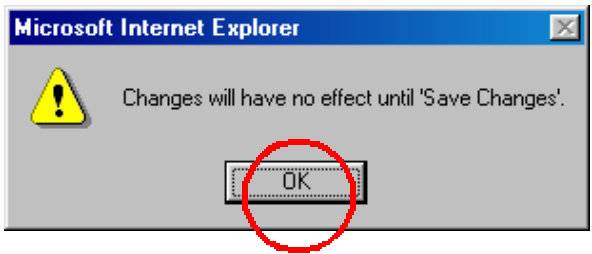
Note: VPI: “0” and VCI: “35” settings are most common among DSL providers. This will not work for others who have different VPI and VCI settings. Please contact your service provider for the correct VPI and VCI settings.

Make sure PVC settings are entered correctly:

VPI: **“0”**

VCI: **“35”**

Click **OK**

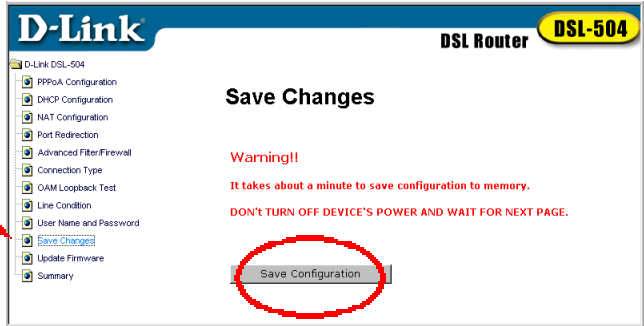


7

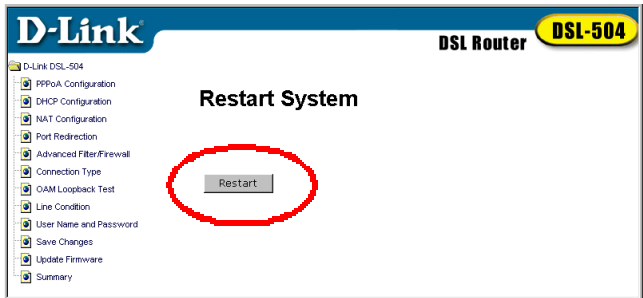
Configuring the DSL-504/CZ *continued*

Click on Save Changes in the left column of the screen.

Click on Save Configuration



Click on Restart



Note: Do not manually restart the modem. It will automatically restart by itself. Once you are finished with your installation, you should be able to access the Internet.

You have completed the installation of the DSL-504/CZ.

Troubleshooting

When dealing with networking equipment, the most common source of problems are the network cables themselves. This can be easily checked. Verify that the "Link" LEDs under both the ADSL and Ethernet headings on the front of your DSL-504/CZ are glowing a steady green. If they are not lit, try using a different cable. You may also need to use a different kind of cable.

Included with this modem is an Ethernet cross over cable and a straight through phone line.

If you are connecting the DSL-504/CZ to an Ethernet switch or hub you will need to purchase an Ethernet straight through cable to make the connection. For the phoneline, use a crossover box that will convert your cable. This way if your DSL signal is coming from a different set of phone wires in your wall this module will check the second set of wires.

If you still can't get a steady ADSL link light call your Internet Service Provider or Phone Company for instructions as you may have an in the wall wiring problem.

Most other problems result from improper TCP/IP settings. Run through the previous instructions again to verify that your product was set up correctly.

*If you do not connect within five minutes, you may need to connect manually. Go back to Step 6 in this guide to "login to the web-based management module." Under PPPoA configuration (on the screen as shown in Step 7), click on "Connect" at the bottom of the window.