



***DSL-504 for PPPoE  
ADSL Router  
Quick Install Guide***

*\* Please refer to the Manual on the CD-ROM for more detailed information.*

# 1

## Connecting the DSL-504

To setup the DSL-504, begin by connecting it to a power source.



Once the unit power is on, connect one end of the included Ethernet cable to the DSL-504's ethernet port and connect the other end of the cable into the NIC which is installed in your computer.



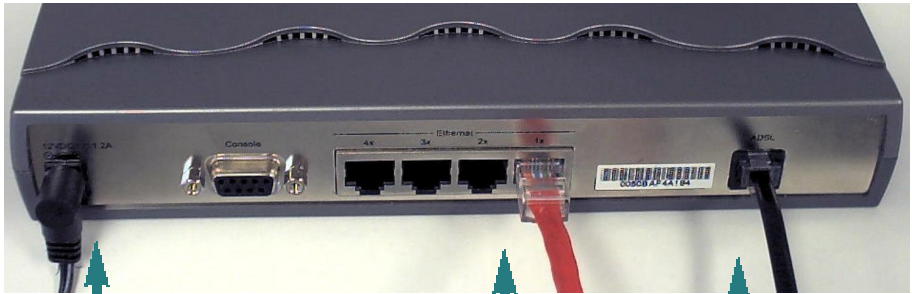
If the cable connection is good, a green LED on the front of the DSL-504 labeled Ethernet/Link will glow steadily.

# 1

## Connecting the DSL-504 *continued*

Now connect the phoneline cable from the DSL-504 to your phone jack.

*When you have completed all the connections, your DSL-504 will look like this:*



### **Power Cord**

(Plug the other end of the power cord into the power outlet.)

### **Ethernet Cable**

(Plug the other end of the Ethernet cable into the Ethernet port on the NIC, which is installed in your computer.)

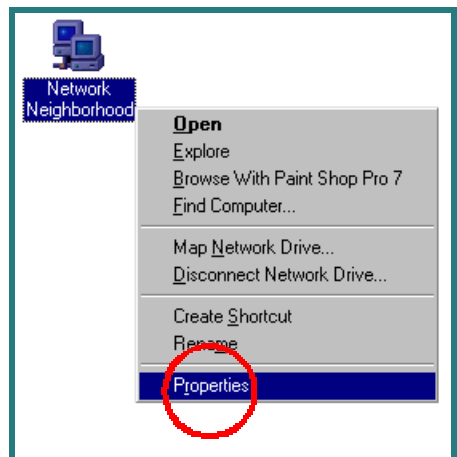
### **Phone line cable**

(Plug the other end of the phone line cable into the phone jack.)

# 2

## Setting up the Computer

**Right-Click** the **Network Neighborhood** (Win 98/98SE) or **My Network Places** (Win ME/2000) icon on your desktop.

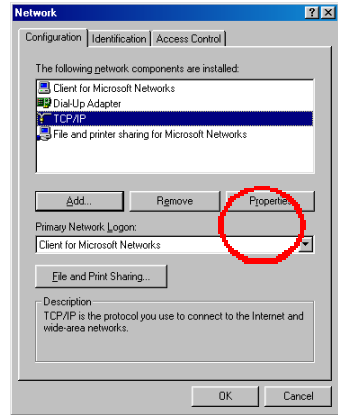


**Select Properties**

# 2

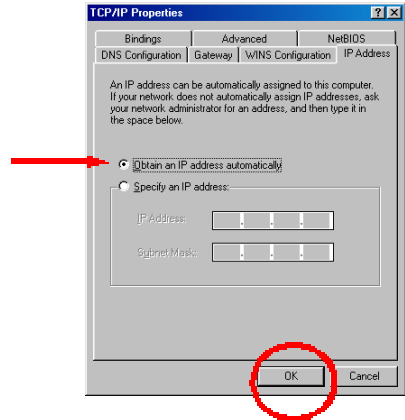
## Setting up the Computer *continued*

Highlight the line that reads **TCP/IP** and points to your installed Ethernet NIC.



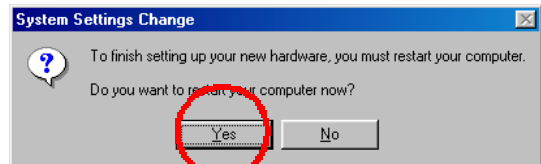
**Click Properties**

At this screen, select the IP Address tab. Select **Obtain an IP Address Automatically**.



**Click OK**

You will be prompted to reboot in Win 98/98SE or ME, For Windows 2000, **Restart** your computer manually.



**Click Yes**

When your computer restarts, you will automatically receive an IP address from the DSL-504.



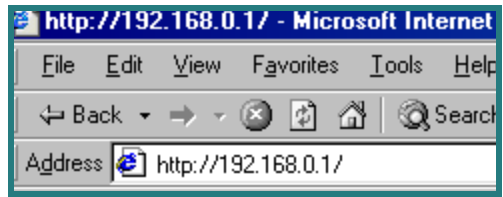
# 3

## Accessing the DSL-504's Web Based Management

The DSL-504 requires Internet Explorer 4.0 or higher, or Netscape Communicator 4.0 or higher.

Please open your Web Browser and enter this URL:

**http://192.168.0.1** This will launch the DSL-504's integrated web-based management system.



Click on **Login** to the web-based management module.

**Login to the web-based management module**

This **Enter Network Password** screen will appear.

The default **User Name** is **admin** and the default **Password** is also **admin**.

Click **OK**

A screenshot of a dialog box titled "Enter Network Password". It contains a key icon and the text "Please type your user name and password." Below this, there are labels for "Site:" (192.168.0.1) and "Realm:" (D-Link DSL-500). There are input fields for "User Name" (containing "admin") and "Password" (containing "admin"). A checkbox labeled "Save this password in your password list" is unchecked. At the bottom right, there are "OK" and "Cancel" buttons. The "OK" button is circled in red.

# 4

## Configuring the DSL-504

At this window,

**Select PPPoE Configuration** in the left column.

**Enter the Login User Name and Password**, provided to you by your Internet Service Provider.

Authentication is set to detect automatically. If your current selection does not work, select

**the other option whether it would be “pap” or “chap.”**  
**Please contact your ISP for your correct authentication setting.**

Please be certain that **enabled** is displayed in the **Connect On Demand** field.

Make sure PVC settings are entered correctly:

VPI: “0”

VCI: “35”

**Click OK**

**D-Link** DSL Router **DSL-504**

**PPPoE Configuration**

**PPPoE Login**

Login User Name:

Login Password:

Authentication:

Connect On Demand:

Idle Time:  minutes

**PPP Information**

IP Address: 0.0.0.0

Connection Status: Disconnect

**PVC**

VPI:

VCI:

***Note: VPI: “0” and VCI: “35” settings are most common among DSL providers. This will not work for others who have different VPI and VCI settings. Please contact your service provider for the correct VPI and VCI settings.***

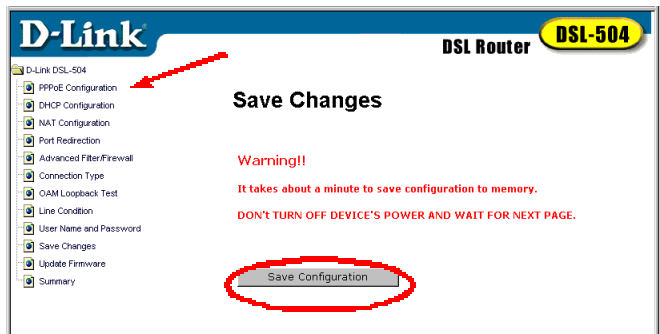
# 4

## Configuring the DSL-504 *continued*

Click OK

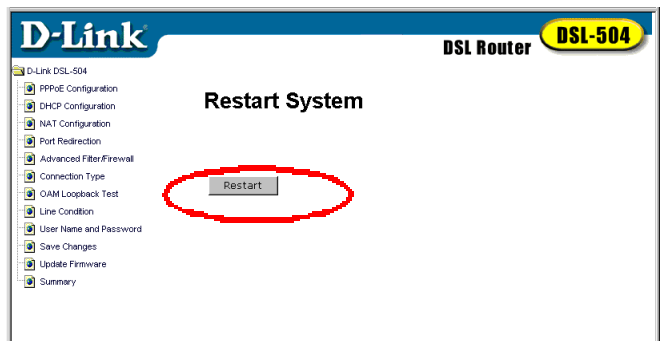


Click on **Save Changes** in the left column of the screen.



Click on **Save Configuration**

Click on **Restart**



*Note: Do not manually restart the modem. It will automatically restart by itself. Once you are finished with your installation, you should be able to access the Internet.*

*You have completed the installation of the DSL-504.*