



***DSL-100D for PPPoE
PCI ADSL Modem
Quick Install Guide***

* Please refer to the Manual on the CD-ROM for more detailed information.

1

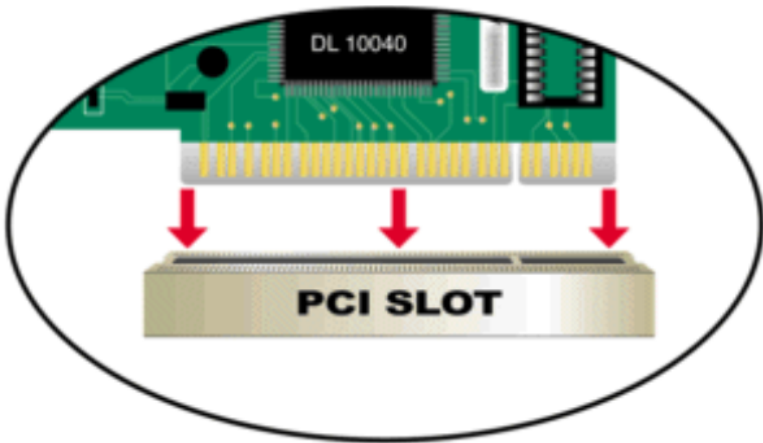
DSL-100D Hardware Installation

POWER OFF your computer.

Disconnect its power, and remove its case.

(Follow your PC manufacturer's instructions to prevent damage or injury.)

Place the DSL-100D into an available PCI slot.



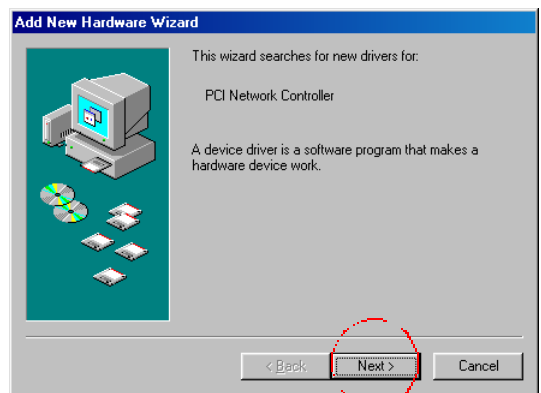
2

DSL-100D Driver Installation

Replace the cover and **POWER ON** your computer.

Windows will recognize the **DSL-100D** modem and prompt for drivers.

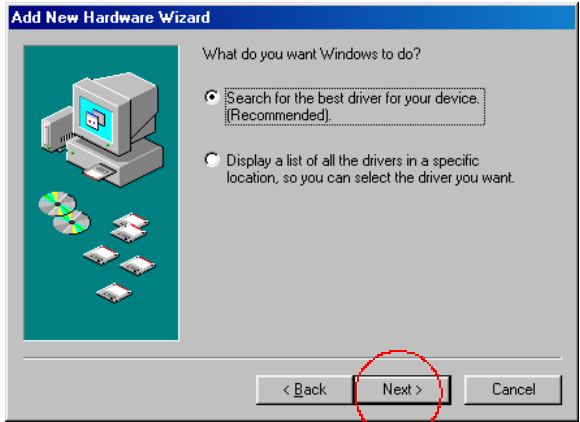
Click Next



2

DSL-100D Driver Installation *continued*

At this screen, make sure that **“Search for the best driver for your device...”** is selected.



Click Next

At this window, check **“Specify a location.”**



Click Browse

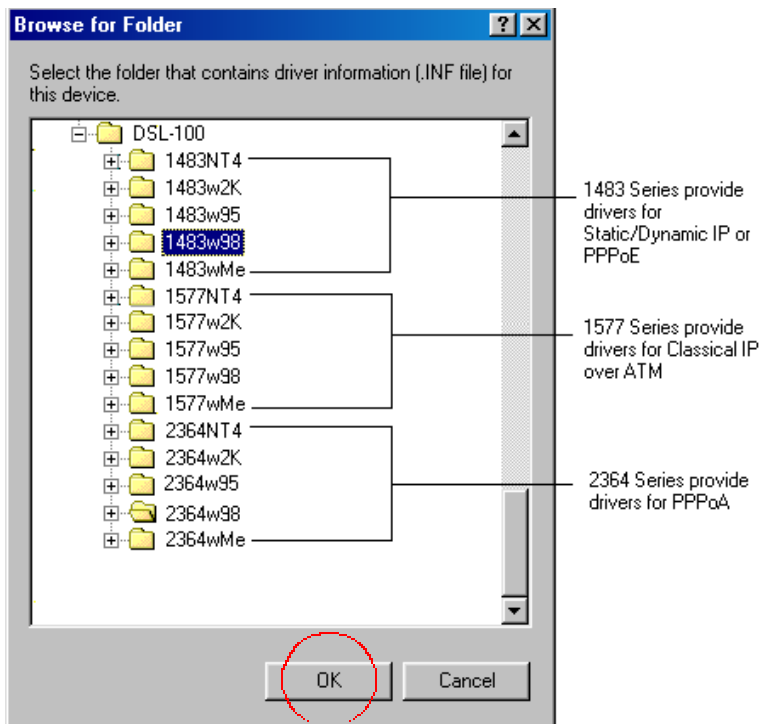
Windows OS	RFC 1483(MPoA)	RFC 1577(IPoA)	RFC 2364(PPPoA)
Windows 95	1483W95	1577W95	2364W95
Windows 98/SE	1483W98	1577W98	2364W98
Windows NT 4.0	1483NT4	1577NT4	2364NT4
Windows 2000	1483W2K	1577W2K	2364WME
Windows ME	1483WME	1577WME	2364WME

2

DSL-100D Driver Installation *continued*

Match your OS with the correct RFC series (as shown in the table on the previous page) to select the proper drivers for the DSL-100D modem. Then select the proper folder in the “Browse for Folder” screen, as shown below. If you are uncertain of the correct RFC series, please contact your ISP (Internet Service Provider.)

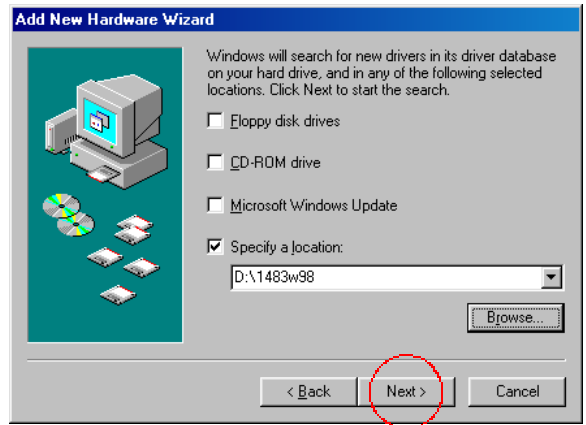
Using the chart on the previous page, please highlight the folder, as shown below, that corresponds to both your OS and your RFC series.



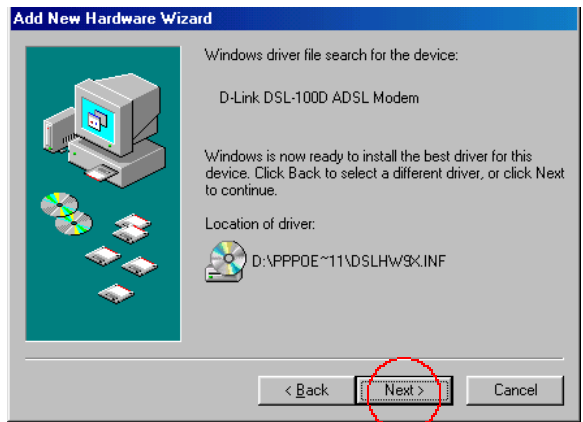
Click OK

2

DSL-100D Driver Installation *continued*



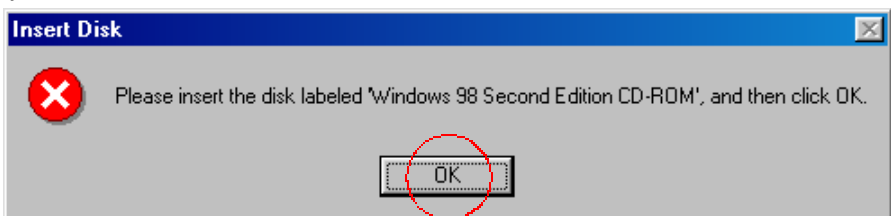
Click Next



Click Next

The computer will now install and build the drivers information database.

If this screen appears, place your Windows Operating System CD into your CD drive.



Click OK

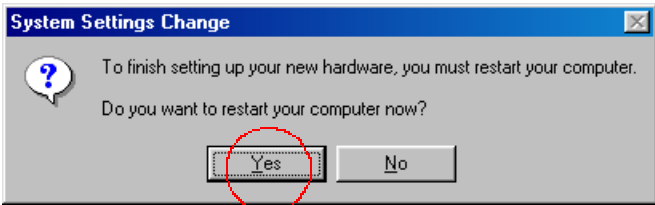
2

DSL-100D Driver Installation *continued*

Click **Finish**



Click **Yes** and the computer will restart automatically.



3

DSL-100D Modem Configuration

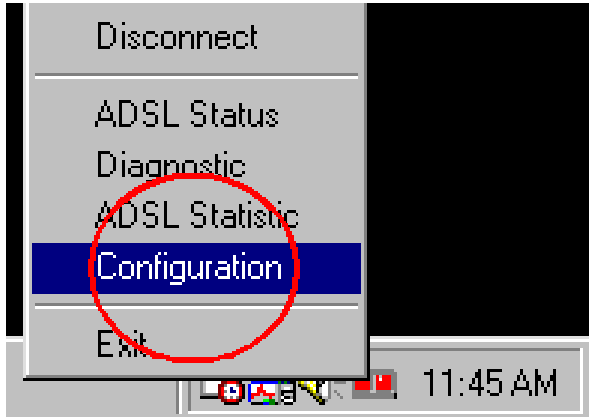
Right click on the icon, circled here, located in the lower right hand corner of your computer screen, in the systray box.



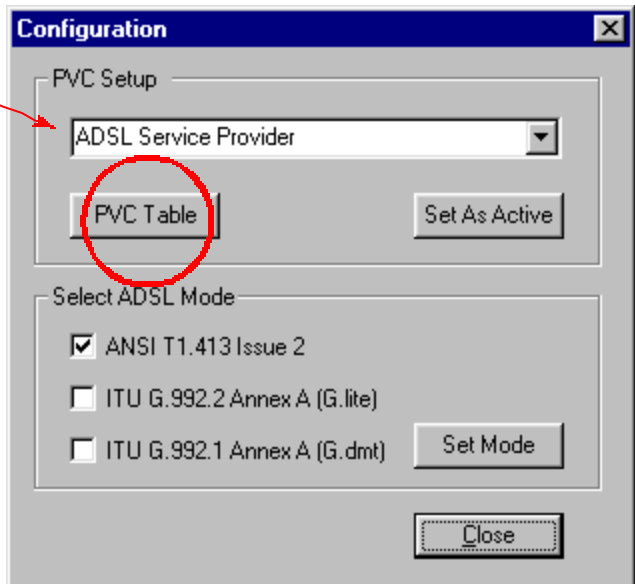
3

DSL-100D Modem Configuration *continued*

Select Configuration



When this screen appears, make sure that the **ADSL Service Provider** is selected.



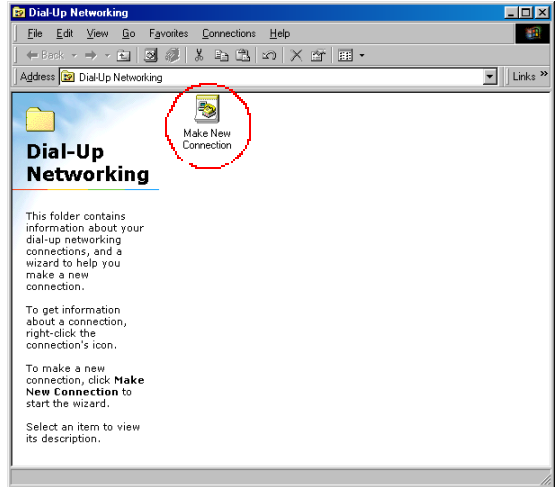
Click on “**PVC Table**,” to edit the connection type.

4

Manually Setting up Dial-Up Networks

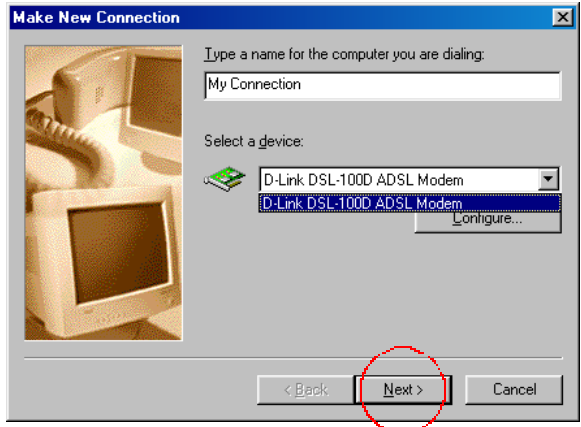
Go to
**START>PRO-
GRAMS>COMMUNI-
CATIONS>DIAL-UP
NETWORKING**

**Double Click on “Make
New Connection.”**



Make sure that **“D-Link
DSL-100D ADSL
Modem”** is selected in the
“Select a device” menu.

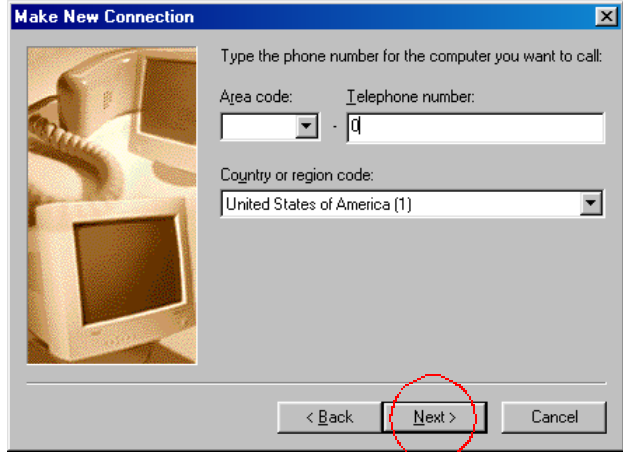
Click Next



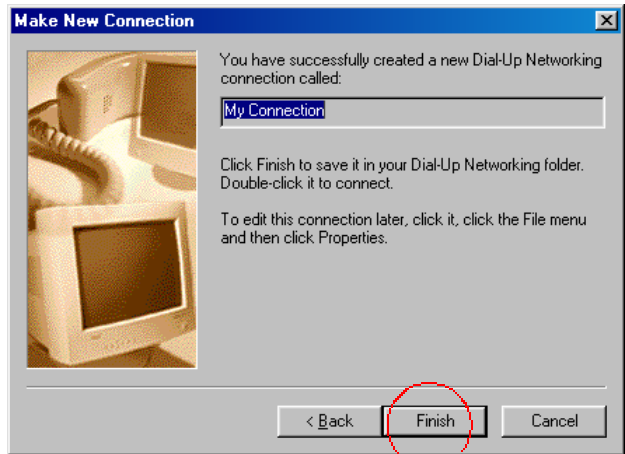
4

Setting up Dial-Up Networks *continued*

Enter “0” in the telephone number section.



Click Next

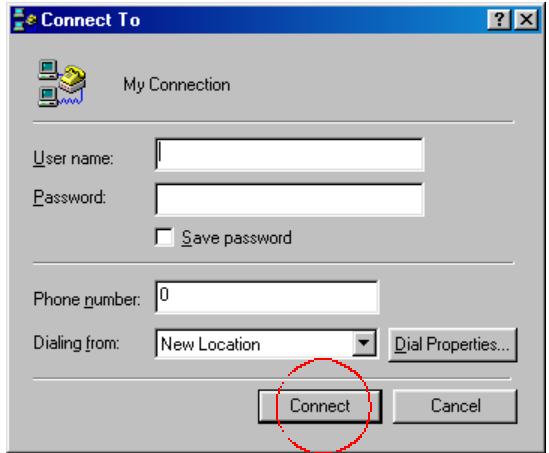


Click Finish

5

Logging On

Enter **User name** and
Password.



Click Connect

You can now access the Internet using your DSL-100D ADSL modem!