


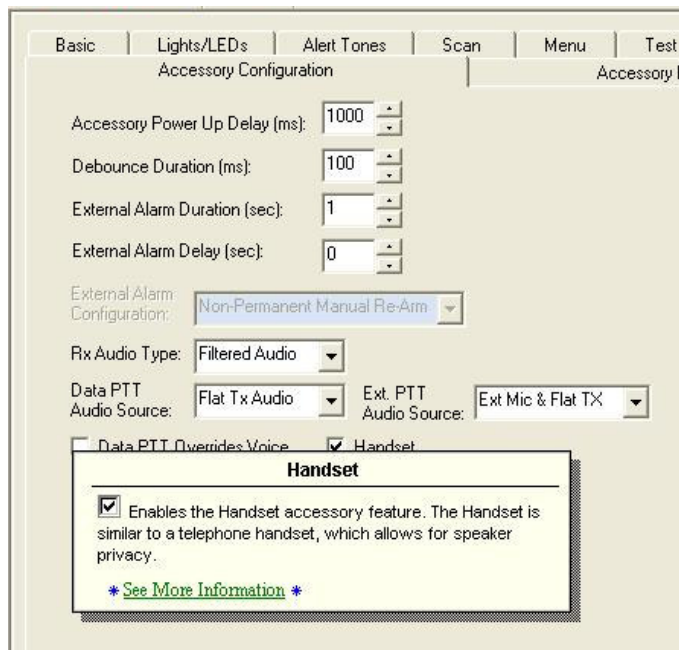
Engineer: RBP	Date: 5/22/06	 JPS Communications 5800 Departure Drive, Raleigh, NC 27616			
Drawn: RBP	Date: 5/22/06				
Approved: CTS	Date: 5/22/06	Title: ACU RADIO APPLICATION NOTES			
Issued/ Revised	Date: 10/24/06	Size: A	Dwg. #: 5961-271313-APP	Rev: A2	Sheet: 1 Of 1

APPLIES TO: MOTOROLA CDM750, CDM1250 CDM1550, CDM1550-LS, CDM1550-LS+, PRO3100, PRO5100, PRO7100, CM200, CM300, GM300, GTX PRIVACY PLUS, GTX LTR, M1225, M1225-LS, M130, M208, M216, PM400, SM120, SM50 MOBILES (FRONT CONNECTOR)

RADIO MODIFICATIONS: None required.

RADIO PROGRAMMING:

1. Mobile radios should normally be programmed for low transmit power.
2. This interface will typically function with no additional requirement for programming. The supported radio models that have an internal speaker will also have the follow option to enable handset and this will shut off the internal speaker.



RADIO CONTROLS:

1. Adjust the Volume Control until the yellow “SIGNAL” indicator on the associated DSP Module flashes with receive audio.

CABLING:

Standard ACU-1000 and ACU-T Interface cables are made up of a 2 foot TRP Radio Tray Interface cable and the appropriate 13-foot Extension cable.

ACU-1000 Interface Cable	JPS P/N 5961-291313	(5961-271313 + 5961-261002-00)
ACU-T Interface Cable	JPS P/N 5961-281313	(5961-271313 + 5961-281013-00)
TRP-1000 Shelf Interface Cable	JPS P/N 5961-271313	

DSP JUMPERS:

JP1	Low Impedance *
JP2	Balanced *

DSP PROGRAMMING: (See Notes)

RX Level	7	-16dBm
TX Level	6*	0dBm*
Squelch Type	VOX*	
COR Polarity	Active Low*	
High Frequency Equalizer	5	2dB Boost
RX Audio Delay	2*	100 ms*
TX Audio Delay (Radio Type)	0*	No Delay*
Noise Reduction Value	0*	Off*
VOX/VMR Threshold	1*	Med1*
VOX/VMR Hang Time	3*	775 ms*
COR Inhibit After PTT	1*	100 ms*
All Others	As needed	

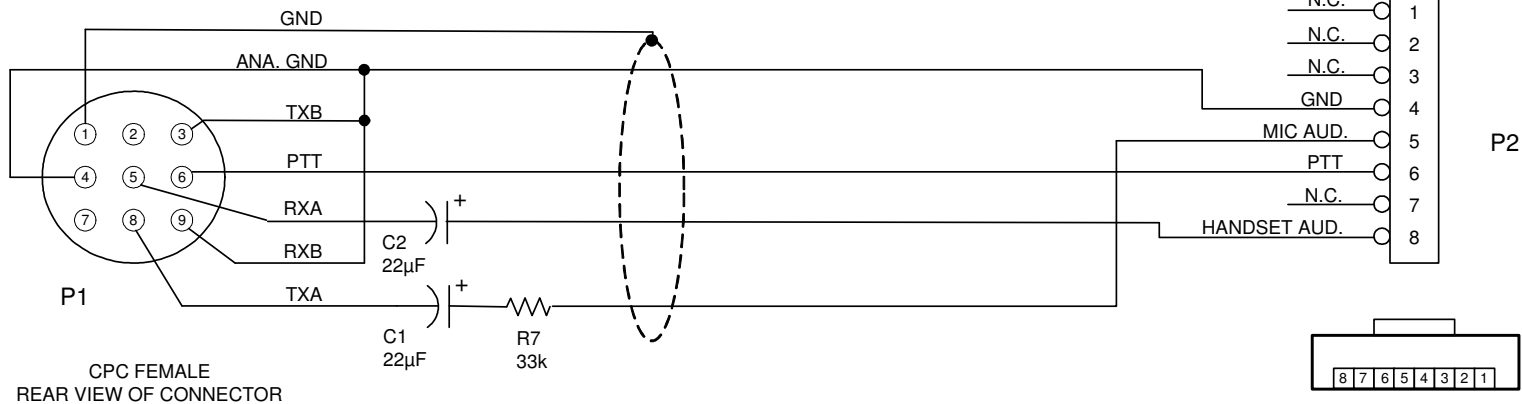
(* Indicates Default Value)

NOTES:

PURCHASED PART

Rev	ECO	Date
A2		10-24-06

USE MOLDED CABLE
(JPS P/N 5961-261003-00)

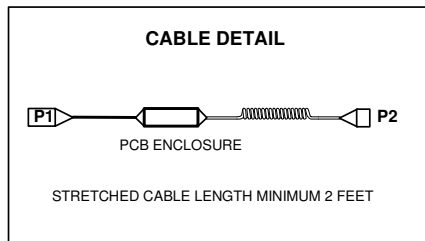


MIC CABLE
(JPS P/N 0314-336008)
OR EQUIVALENT

CPC FEMALE
REAR VIEW OF CONNECTOR

PLUG VIEWED FROM FRONT

THIS CABLE CONNECTS TO THE
FRONT PANEL OF THE RADIO



COMPONENT PCB
(JPS P/N 5961-271000)

C1	JPS P/N 0321-220250
C2	JPS P/N 0321-220250
R7	JPS P/N 1820-333000
JU5	
JU6	

NOTE: SHIELD DRAIN CONNECTED TO PIN 1 OF P1 ONLY.

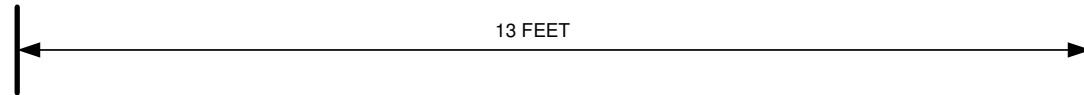
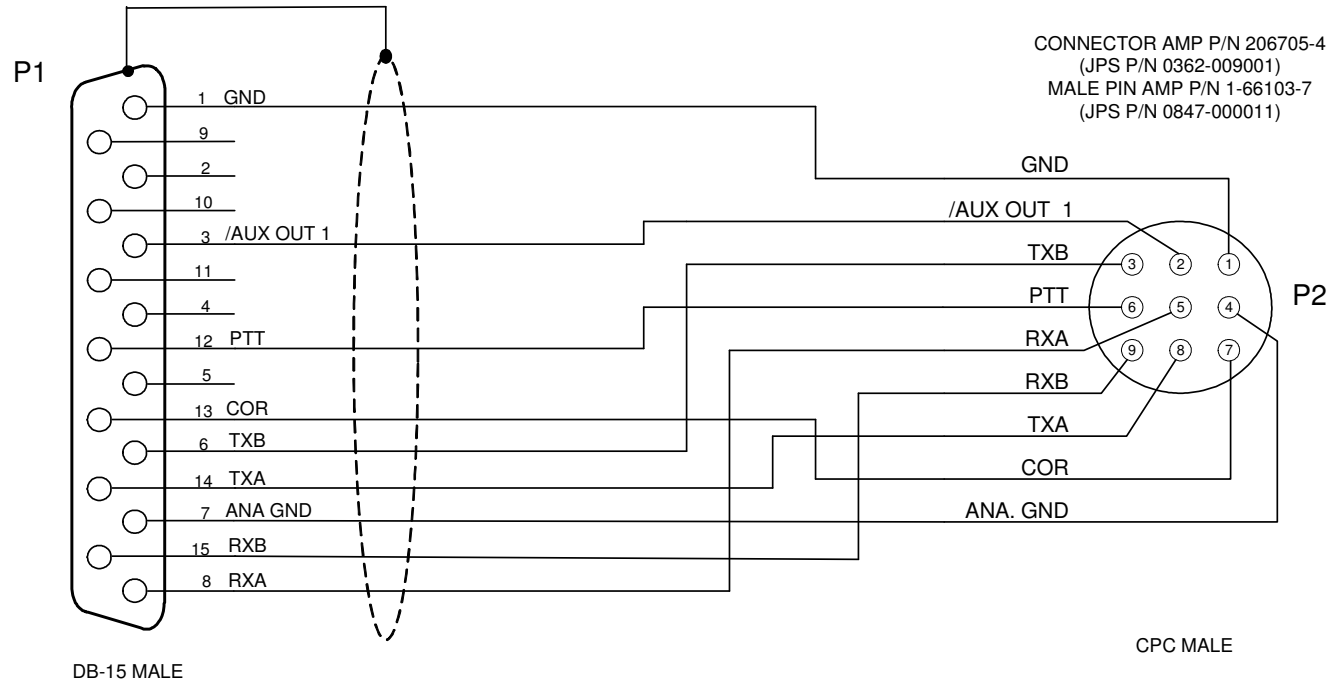
FOR DETAILED CABLE ASSEMBLY INSTRUCTIONS SEE
5961-271001-CBL.

USED WITH:
MOTOROLA CDM750, CDM1250 CDM1550, CDM1550-LS, CDM1550-LS+,
PRO3100, PRO5100, PRO7100, CM200, CM300, GM300, GTX PRIVACY PLUS,
GTX LTR, M1225, M1225-LS, M130, M208, M216, PM400, SM120, SM50
MOBILES (FRONT CONNECTOR)

Designed By: RBP	Raytheon JPS Communications Raleigh, NC USA		
Drawn By: RBP	Title CABLE, CPC TO MOTOROLA HANDSET INTERFACE		
Checked By: CTS	Size A	Document Number 5961-271313	Rev A2
Issued Date MAY 19, 2006		Sheet 1 of 1	

PURCHASED PART

Rev	ECO	Date
A		



- NOTES: 1) USE BELDEN 9934 SHIELDED CABLE.
 2) CONNECT SHIELD DRAIN TO SHELL OF P1 ONLY.
 3) CONNECTORS P1 AND P2 MUST BE MOLDED TO THE CABLE.
 4) CABLE MUST BE LABELED WITH THE RAYTHEON/JPS P/N AND REV, VENDOR CODE AND DATE (MM/YY).

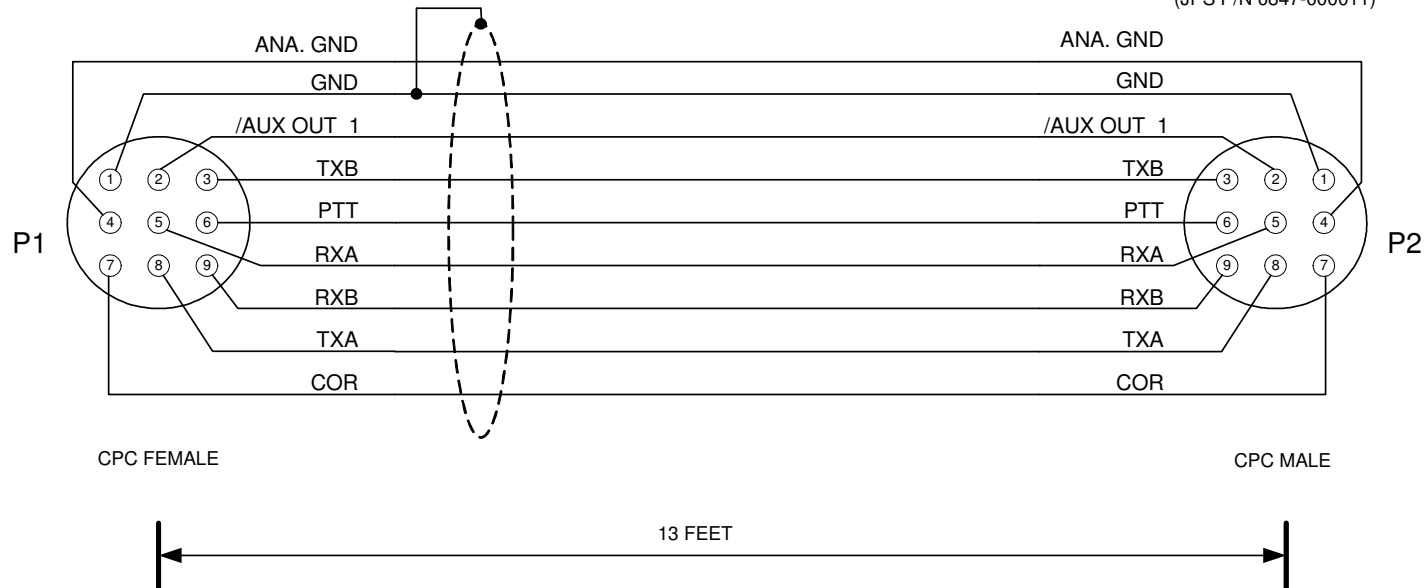
Designed By: JAC	Raytheon JPS Communications		
Drawn By: JAC	Title CABLE, ACU-1000 RADIO EXTENSION - 13 FT		
Checked By: RBP	Size A	Document Number 5961-261002-00	Rev A
Issued Date JANUARY 5, 2004		Sheet <u>1</u> of <u>1</u>	

Rev	ECO	Date
A		

PURCHASED PART

CONNECTOR AMP P/N 206708-1
 (JPS P/N 0362-005003)
 FEMALE PIN AMP P/N 1-66105-8
 (JPS P/N 0362-005002)

CONNECTOR AMP P/N 206705-4
 (JPS P/N 0362-009001)
 MALE PIN AMP P/N 1-66103-7
 (JPS P/N 0847-000011)



- NOTES: 1) USE BELDEN 9934 SHIELDED CABLE.
 2) CONNECT SHIELD DRAIN TO PIN 1 OF P1 ONLY.
 3) CONNECTORS P1 AND P2 MUST BE MOLDED TO THE CABLE.
 4) CABLE MUST BE LABELED WITH THE RAYTHEON/JPS P/N AND REV, VENDOR CODE AND DATE (MM/YY).

Designed By: JAC	Raytheon JPS Communications Raleigh, NC USA		
Drawn By: JAC	Title CABLE, ACU-T RADIO EXTENSION - 13 FT		
Checked By: RBP	Size A	Document Number 5961-281013-00	Rev A
	Issued Date JANUARY 5, 2004	Sheet <u>1</u> of <u>1</u>	